

# ZOONIVERSE



**Citizen Science for the Environment**

[www.zooniverse.org](http://www.zooniverse.org) | Grant Miller | [grant@zooniverse.org](mailto:grant@zooniverse.org) | [@mrniaboc](https://twitter.com/mrniaboc)

# citizen science

*noun*

the collection and analysis of data relating to the natural world by members of the general public, typically as part of a collaborative project with professional scientists.

"the director of education sees a need for citizen science in astronomy"



Translations, word origin, and more definitions

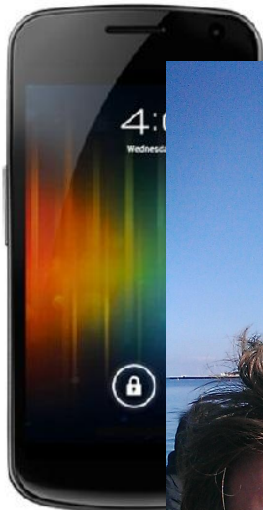


# Christmas Bird Count

*The nation's longest-running citizen science bird project fuels Audubon science year-round*











Hubble Ultra-Deep Field  
Credit: NASA and ESA



# GALAXY ZOO.org

Hi [mriaboc](#)[Home](#)[The Science](#)[How to Take Part](#)[Galaxy Analysis](#)[Forum](#)[Press](#)[Blog](#)[FAQ](#)[Links](#)[Contact Us](#)[Logout](#)[Profile](#)[Galaxy Tutorial](#)[Galaxy Analysis](#)[Galaxy Zoo - Thank You](#)[Show My Galaxies](#)

## Galaxy Analysis

Welcome to Galaxy Zoo's view of the Universe. If you're here you should already have seen the [Tutorial](#), but feel free to go and remind yourself.

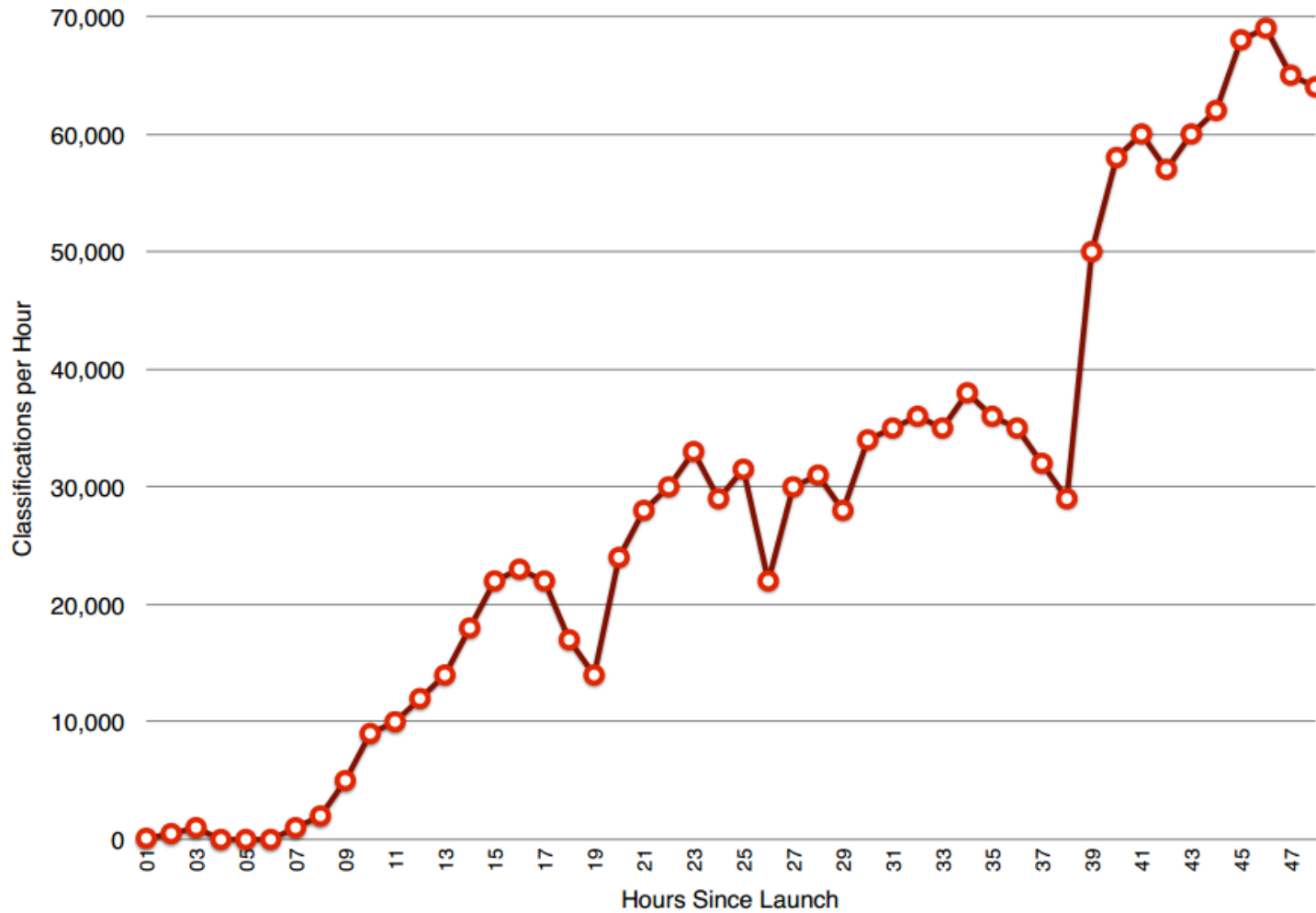
There's no need to agonise for too long over any one image, just make your best guess in each case.


 Show Grid Overlay on the next Image

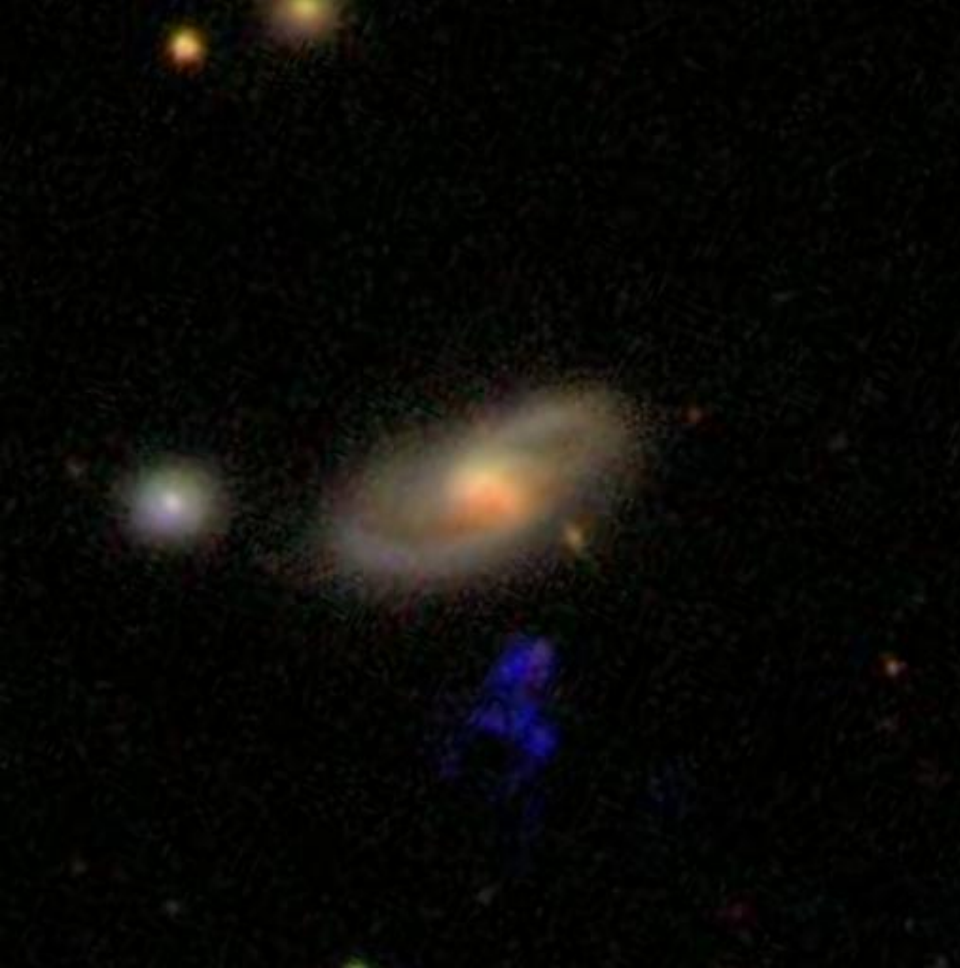
Galaxy Ref:  
**587738570848927867**

Choose the Galaxy Profile  
by clicking the buttons  
below



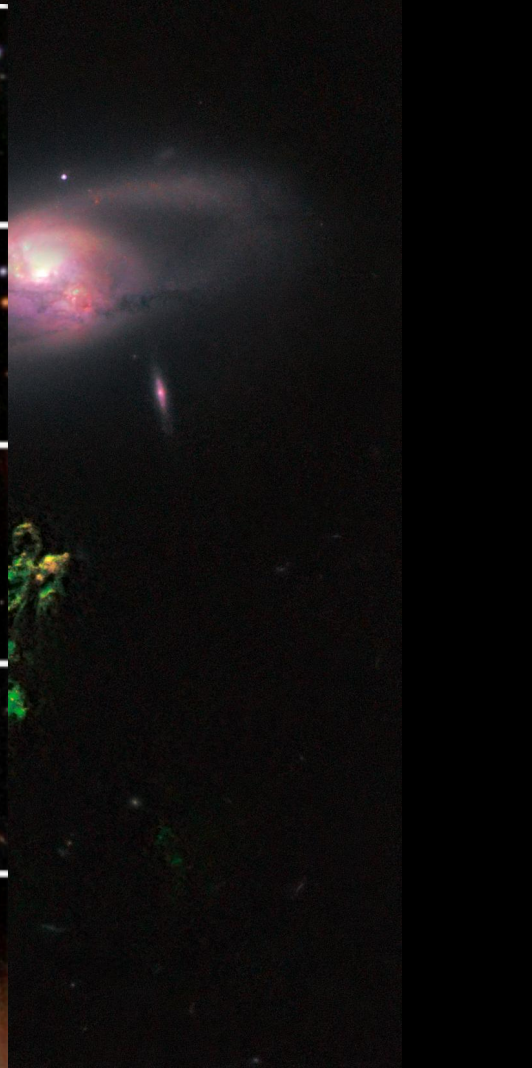
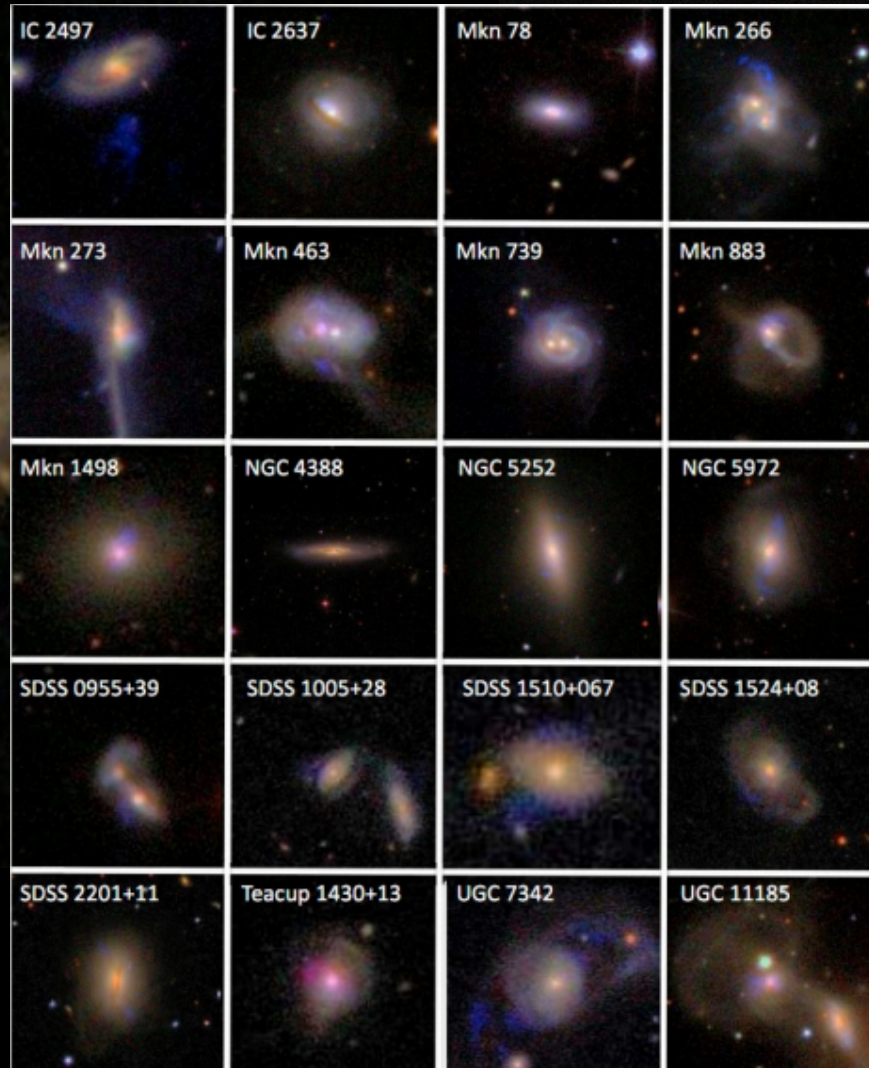


# Hanny's Voorwerp



SDSS image





CLASSIFY

STORY

SCIENCE



DISCUSS

PROFILE

LANGUAGE



Classify



UKIDSS



Invert

Help

Restart

SHAPE

Is the galaxy simply smooth and rounded, with no sign of a disk?



Smooth



Features or disk



Star or artifact



#### WildCam Gorongosa

Identify animals in trail camera images from Gorongosa National Park!

[Get Started](#)



#### Fossil Finder

Join us in the search and discovery of fossils at Lake Turkana, Kenya.

[Get Started](#)



#### Galaxy Zoo: Bar Lengths

Measure the engines of evolution in disk galaxies.

[Get Started](#)



#### Whales as Individuals

Help us identify individual Humpback Whales by clearing our computer algorithms in to patterns on their tails.

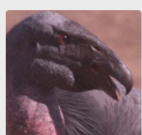
[Get Started](#)



#### Season Spotter Image Marking

Help keep an eye on changing seasons by marking images!

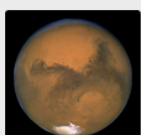
[Get Started](#)



#### Condor Watch

California condors need your help. By tracking their location and social behavior, you can help this endangered species.

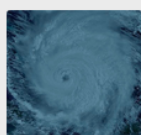
[Get Started](#)



#### Planet Four

Explore the Red Planet. Planetary scientists need your help to discover what the weather is like on Mars.

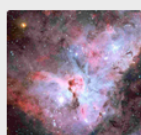
[Get Started](#)



#### Cyclone Center

Classify over 30 years of tropical cyclone data. Scientists at NOAA's National Climatic Data Center need your help.

[Get Started](#)



#### Disk Detective

Find the birthplace of planets. Help comb our galaxy, looking for stars that could harbour planet-forming disks.

[Get Started](#)



#### Milky Way Project

How do stars form? Help us find and draw circles on infrared image data from the Spitzer Space Telescope.

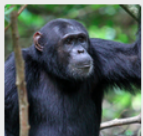
[Get Started](#)



#### Season Spotter Questions

Help keep an eye on changing seasons by answering questions!

[Get Started](#)



#### Chimp & See

Discover the secret life of chimpanzees. We need your help to study, explore, and learn from thousands of videos.

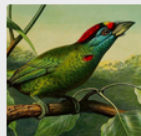
[Get Started](#)



#### AnnoTate

Help transcribe documents from the Tate collection, and reveal the secret lives of artists.

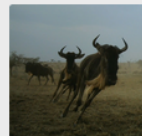
[Get Started](#)



#### Science Gossip

Uncover the history of citizen science. Help us to classify their drawings and map the origins of citizen science.

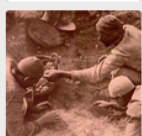
[Get Started](#)



#### Wildbeest Watch

Explore collective intelligence in wildbeest!

[Get Started](#)



#### Ancient Lives

Study the lives of ancient Greeks. The dead don't gather help; scholars study the Oxyrhynchus collection.

[Get Started](#)



#### Old Weather

Model Earth's climate using historic ship logs. Help recover observations made by US Navy and Coast Guard ships.

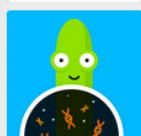
[Get Started](#)



#### Asteroid Zoo

Help us discover near-Earth asteroids, protect Earth, find potential future resources, and understand our Solar System.

[Get Started](#)



#### Worm Watch Lab

Track genetic mysteries. We can better understand how our genes work by spotting the worms laying eggs.

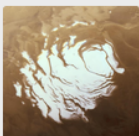
[Get Started](#)



#### Orchid Observers

Help measure the effect of climate change. Photograph and classify orchids to assist climate research.

[Get Started](#)



#### Planet Four: Terrans

Help planetary scientists characterize surfaces on Mars by examining images taken with the Curiosity Camera

[Get Started](#)



#### Galaxy Zoo

Help us discover the secrets of the universe. Help search for unknown exotic particles in the LHC data.

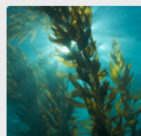
[Get Started](#)



#### Higgs Hunters

Uncover the building blocks of the universe. Help search for unknown exotic particles in the LHC data.

[Get Started](#)



#### Floating Forests

Discover Floating Forests. We're studying how help forests grow and change. Help find these forests in images from space!

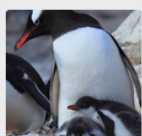
[Get Started](#)



#### Radio Galaxy Zoo

Match glowing black holes to their jets. We need help to compare infrared and radio data to spot black holes.

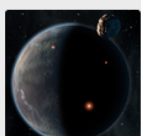
[Get Started](#)



#### Penguin Watch

Tap on penguins for science. Tap penguins in remote regions to help us understand their lives and environment.

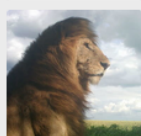
[Get Started](#)



#### Planet Hunters

Find planets around stars. Lightcurve changes from the Kepler spacecraft can indicate transiting planets.

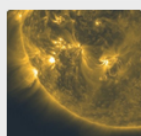
[Get Started](#)



#### Snapshot Serengeti

Go wild in the Serengeti! We need your help to classify all the different animals caught in millions of camera trap images.

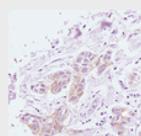
[Get Started](#)



#### Sunspotter

Sorting out sunspots. Help us organize images by complexity to better understand the Sun's magnetic activity.

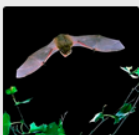
[Get Started](#)



#### Cell Slider

Analyze real life cancer data. You can help cancer research institution find curves for cancer.

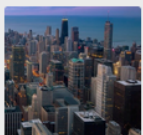
[Get Started](#)



#### Bat Detective

You're hot on the trail of bats! Help scientists characterize bat calls recorded by citizen scientists.

[Get Started](#)



#### Chicago Wildlife Watch

Monitor wildlife in urban Chicago. We need your help to tag animals around Chicago's parks and urban areas.

[Get Started](#)



#### Operation War Diary

Explore soldiers' diaries from the First World War. Annotate and tag diaries from the First World War.

[Get Started](#)



#### Plankton Portal

Dive into the planktonic world. No plankton means no ocean life. Identify different plankton to assess the health of our seas.

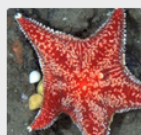
[Get Started](#)



#### Notes from Nature

Take Notes from Nature. Transcribe museum records to take notes from nature, contribute to science.

[Get Started](#)



#### Seafloor Explorer

Help explore the ocean floor. The HubCam team and the Woods Hole Oceanographic Institution need your help!

[Get Started](#)



#### Space Warps

Help astronomers find elusive gravitational lenses to help us understand the universe.

[Get Started](#)



### WildCam Gorongosa

Identify animals in trail camera images from Gorongosa National Park!

[Get Started](#)



### Fossil Finder

Join us in the search and discovery of fossils at Lake Turkana, Kenya.

[Get Started](#)



### Galaxy Zoo: Bar Lengths

Measure the engines of evolution in disk galaxies.

[Get Started](#)



### Whales as Individuals

Help us identify individual Humpback Whales by clearing our computer algorithms in its patterns on their tails.

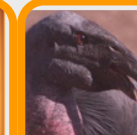
[Get Started](#)



### Season Spotter image Marking

Help keep an eye on changing seasons by marking images!

[Get Started](#)



### Condor Watch

California condors need your help. By tracking their location and social behavior, you can help this endangered species.

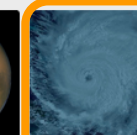
[Get Started](#)



### Planet Four

Explore the Red Planet. Planetary scientists need your help to discover what the weather is like on Mars.

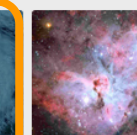
[Get Started](#)



### Cyclone Center

Classify over 30 years of tropical cyclone data. Scientists at NOAA's National Climatic Data Center need your help.

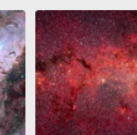
[Get Started](#)



### Disk Detective

Find the birthplace of planets. Help comb our galaxy, looking for stars that could harbour planet-forming disks.

[Get Started](#)



### Milky Way Project

How do stars form? Help us find and draw circles on infrared image data from the Spitzer Space Telescope.

[Get Started](#)



### Season Spotter Questions

Help keep an eye on changing seasons by answering questions!

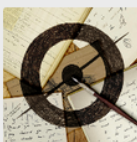
[Get Started](#)



### Chimp & See

Discover the secret life of chimpanzees. We need your help to study, explore, and learn from thousands of videos.

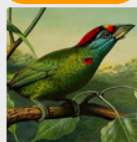
[Get Started](#)



### AnnoTate

Help transcribe documents from the Tate collection, and reveal the secret lives of artists.

[Get Started](#)



### Science Gossip

Uncover the history of citizen science. Help us to classify their drawings and map the origins of citizen science.

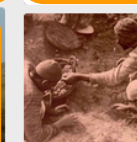
[Get Started](#)



### Wildbeest Watch

Explore collective intelligence in wildbeest!

[Get Started](#)



### Ancient Lives

Study the lives of ancient Greeks. The data you'll gather helps scholars study the Oxyrhynchus collection.

[Get Started](#)



### Old Weather

Model Earth's climate using historic ship logs. Help recover observations made by US Navy and Coast Guard ships.

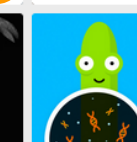
[Get Started](#)



### Asteroid Zoo

Help us discover near-Earth asteroids, protect Earth, find potential future resources, and understand our Solar System.

[Get Started](#)



### Worm Watch Lab

Track genetic mysteries. We can better understand how our genes work by spotting the worms laying eggs.

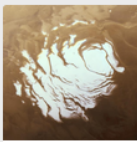
[Get Started](#)



### Orchid Observers

Help measure the effect of climate change. Photograph and classify orchids to assist climate research.

[Get Started](#)



### Planet Four: Terrans

Help planetary scientists characterize surfaces on Mars by examining images taken with the Context Camera

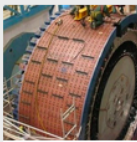
[Get Started](#)



### Galaxy Zoo

Help us discover the secrets of galaxy evolution by classifying distant galaxies.

[Get Started](#)



### Higgs Hunters

Uncover the building blocks of the universe. Help search for unknown exotic particles in the LHC data.

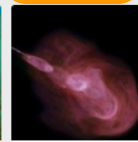
[Get Started](#)



### Floating Forests

Discover Floating Forests. We're studying how help forests grow and change. Help find these forests in images from space!

[Get Started](#)



### Radio Galaxy Zoo

Match growing black holes to their jets. We need help to compare infrared and radio data to spot black holes.

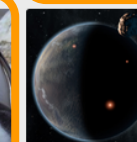
[Get Started](#)



### Penguin Watch

Spn on penguins for science. Tag penguins in remote regions to help us understand their lives and environment.

[Get Started](#)



### Planet Hunters

Find planets around stars. Lightcurve changes from the Kepler spacecraft can indicate transiting planets.

[Get Started](#)



### Snapshot Serengeti

Go wild in the Serengeti! We need your help to classify all the different animals caught in millions of camera trap images.

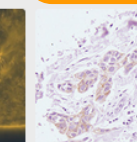
[Get Started](#)



### Sunspotter

Sorting real sunspots. Help us organize images by complexity to better understand the Sun's magnetic activity.

[Get Started](#)



### Cell Slider

Analyze real life cancer data. You can help cancer research institution find cures for cancer.

[Get Started](#)



### Bat Detective

You're hot on the trail of bats! Help scientists characterize bat calls recorded by citizen scientists.

[Get Started](#)



### Chicago Wildlife Watch

Monitor wildlife in urban Chicago. We need your help to tag animals around Chicago's parks and urban areas.

[Get Started](#)



### Operation War Diary

Explore soldiers' diaries from the First World War. Annotate and tag diaries from the First World War.

[Get Started](#)



### Plankton Portal

Dive into the planktonic world. No plankton means no ocean life. Identify different plankton to assess the health of our seas.

[Get Started](#)



### Notes from Nature

Take Notes from Nature. Transcribe museum records to take notes from nature, contribute to science.

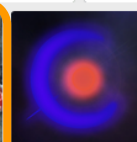
[Get Started](#)



### Seafloor Explorer

Help explore the ocean floor. The HubCam team and the Woods Hole Oceanographic Institution need your help!

[Get Started](#)



### Space Warps

Help astronomers find elusive gravitational lenses to help us understand the universe.

[Get Started](#)



## Albatross (1890)

For most of the 1890s the Albatross was dedicated to fisheries investigations in Alaskan waters and the Bering Sea. During this period the ship also carried the famous zoologist Alexander Agassiz on an expedition to the Galapagos Islands and surveyed a route for an undersea cable between the United States and Hawaii. In 1899 the Albatross again carried Professor Agassiz on an expedition into the South Pacific and visited ten different island groups from the Marquesas to the Northern Mariana Islands.

# Old Weather: Our Weather's Past, the Climate's Future

## Introduction

Help scientists recover Arctic and worldwide weather observations made by United States ships since the mid-19th century by transcribing ships' logs. These transcriptions will contribute to climate model projections and will improve our knowledge of past environmental conditions. Historians will use your work to track past ship movements and tell the stories of the people on board.



### Follow vessels

Choose your voyage by joining a vessel



### Digitise pages

Earn points on each ship. Every page counts



### Get promoted

Work your way up from Cadet to Lieutenant and even become Captain

## Project Statistics

Old Weather transcriptions so far

**67%** OF THE LOGS  
COMPLETED

Arctic

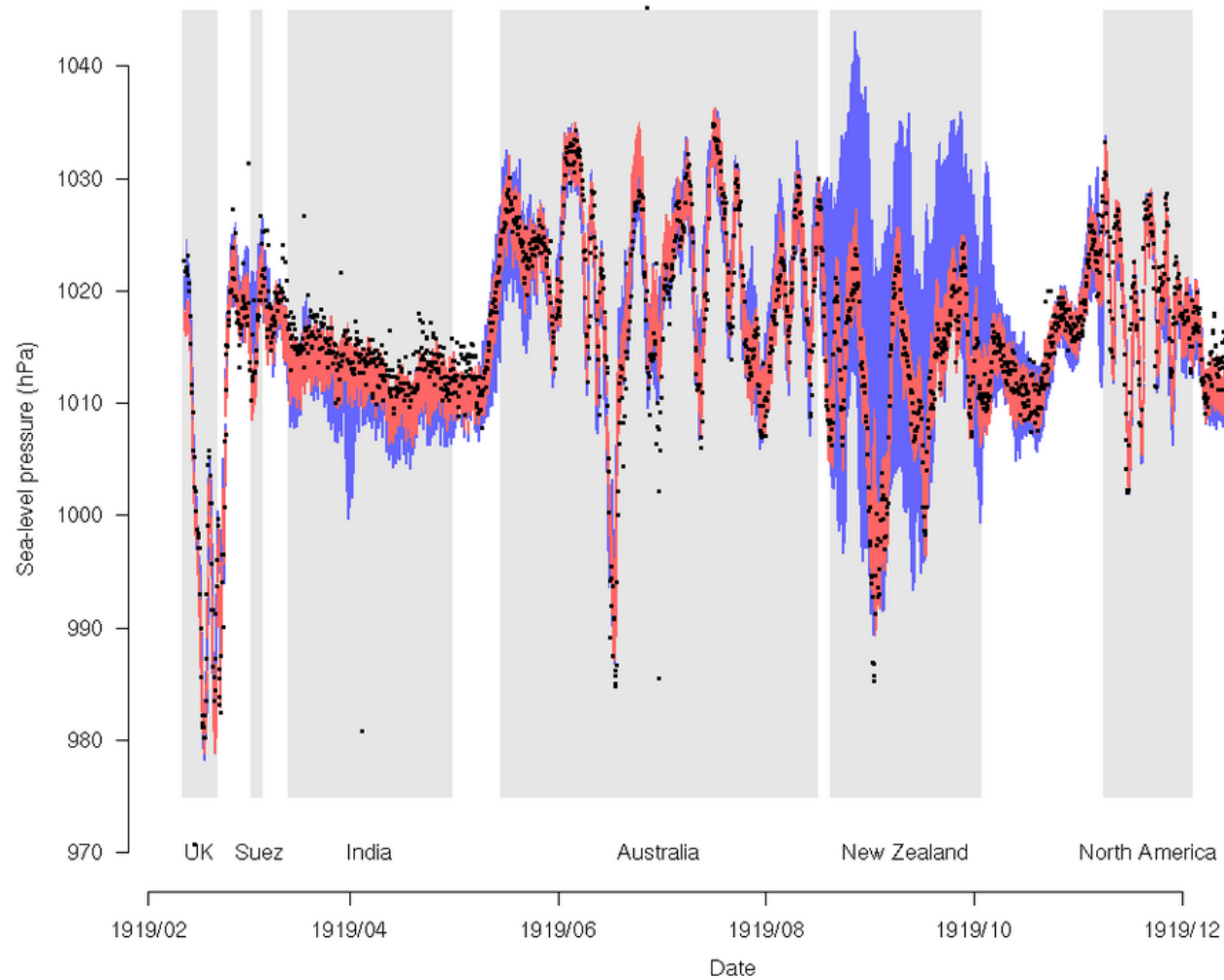
107,231

PAGES DONE

11

VOYAGES DONE





## Monitor Penguins in Remote Regions

Scientists have travelled to some of the coldest areas on the planet to learn more about penguin populations. Help annotate their images of wildlife in Antarctica and the Southern Ocean.

2602228 IMAGES CLASSIFIED

[Get started!](#)

21500 VOLUNTEERS PARTICIPATING

2014-12-29 6:37:00 PM T

Favorite

Hide old marks

Restart tutorial



7°C

BACK

For each type of animals in the image, select it from the list, then click to mark its center.

Adults 11

Chicks

Eggs

Other

FINISHED  
MARKING



Barcode number:  
BM001138852

Status: Requires checking

BACK

Please select the barcode that matches the barcode number above. Then draw a rectangle around the handwritten label that the barcode relates to.

Select barcode

Select specimen label

OK



# Enabling the Community

Featured discussions

Can anyone ID this one?

Posted in Birds

9 posts / 8 participants

Season 4

Posted in Announcements

68 posts / 32 participants

Popular hashtags

- bird
- wildebeest
- warthog
- hartebeest
- fire
- closeup
- hippo
- elephant
- zebra
- buffalo
- hyena
- young
- baboon
- topi
- lion
- giraffe
- cheetah
- impala
- human
- eland

Currently Online

1 user

mrniaboc

Recent Object Comments...



baby #wildebeest

by phf13 40 minutes ago



Could these be mongooses? One bottom left, three at right centre

by Dunedintony 6 hours ago



a #zebra group-hug

by Tarime 6 hours ago



rounded ears, straight tail. bad light

by sthomasma 6 hours ago



by sthomasma 6 hours ago



Three not two

by kssmk2 7 hours ago



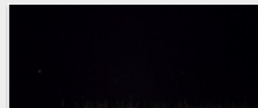
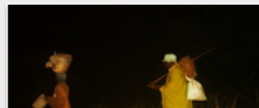
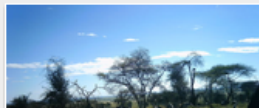
Blurred image

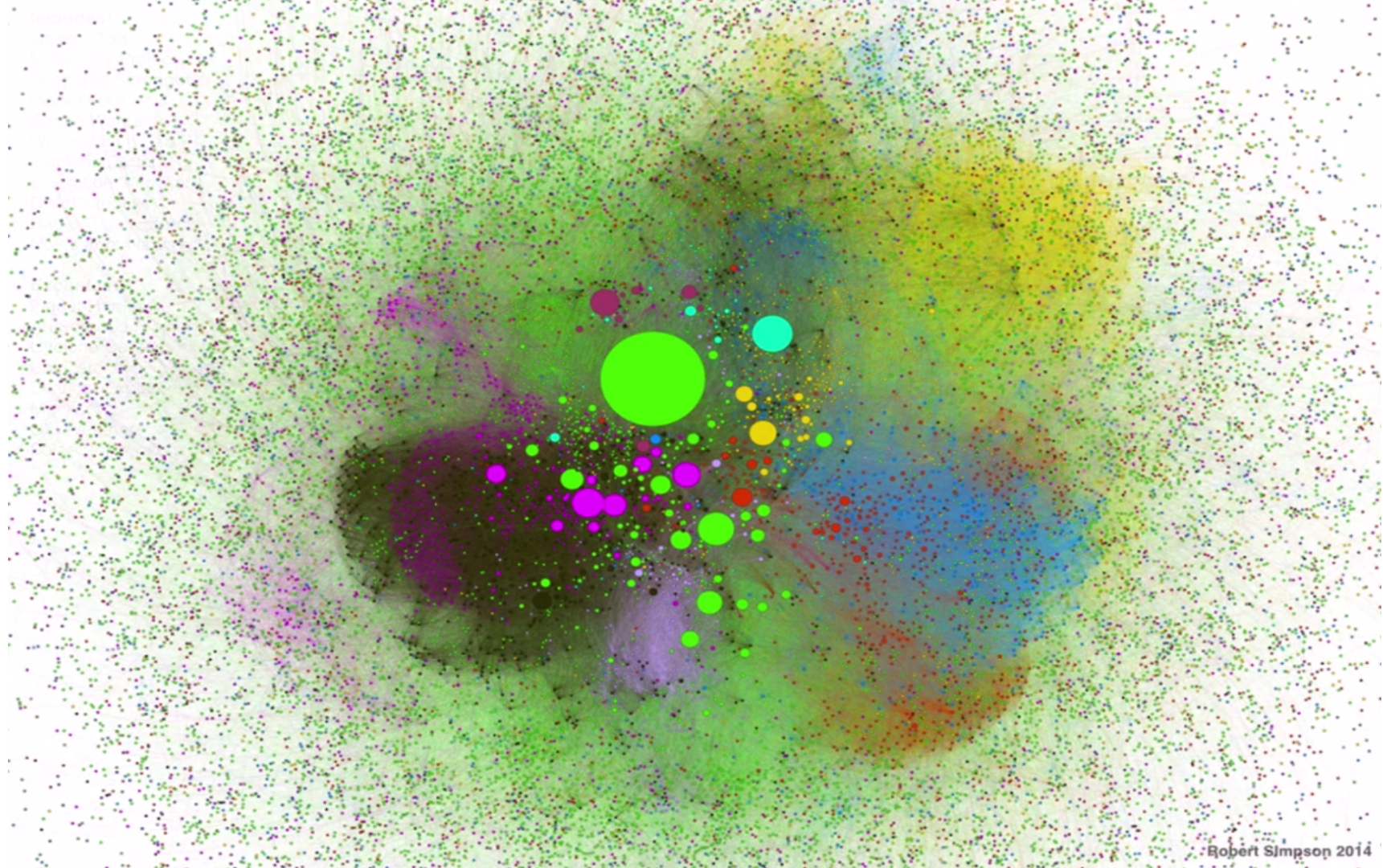
by kssmk2 7 hours ago



What's the large black object under the tree?

by kssmk2 7 hours ago

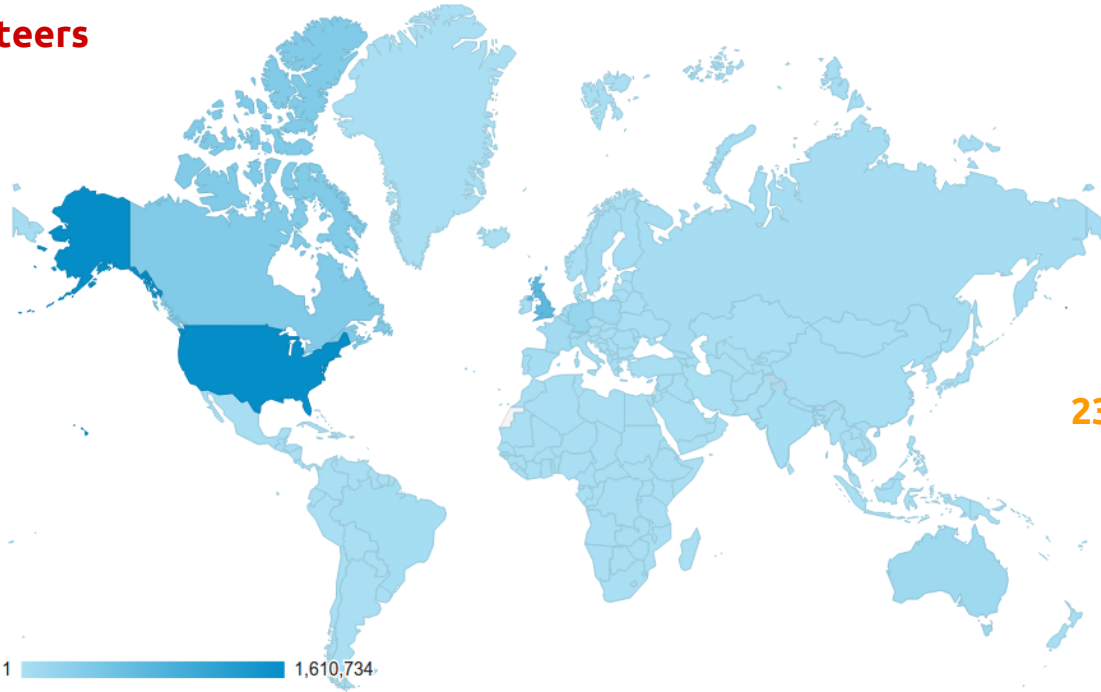






# Location

**1,362,506** volunteers

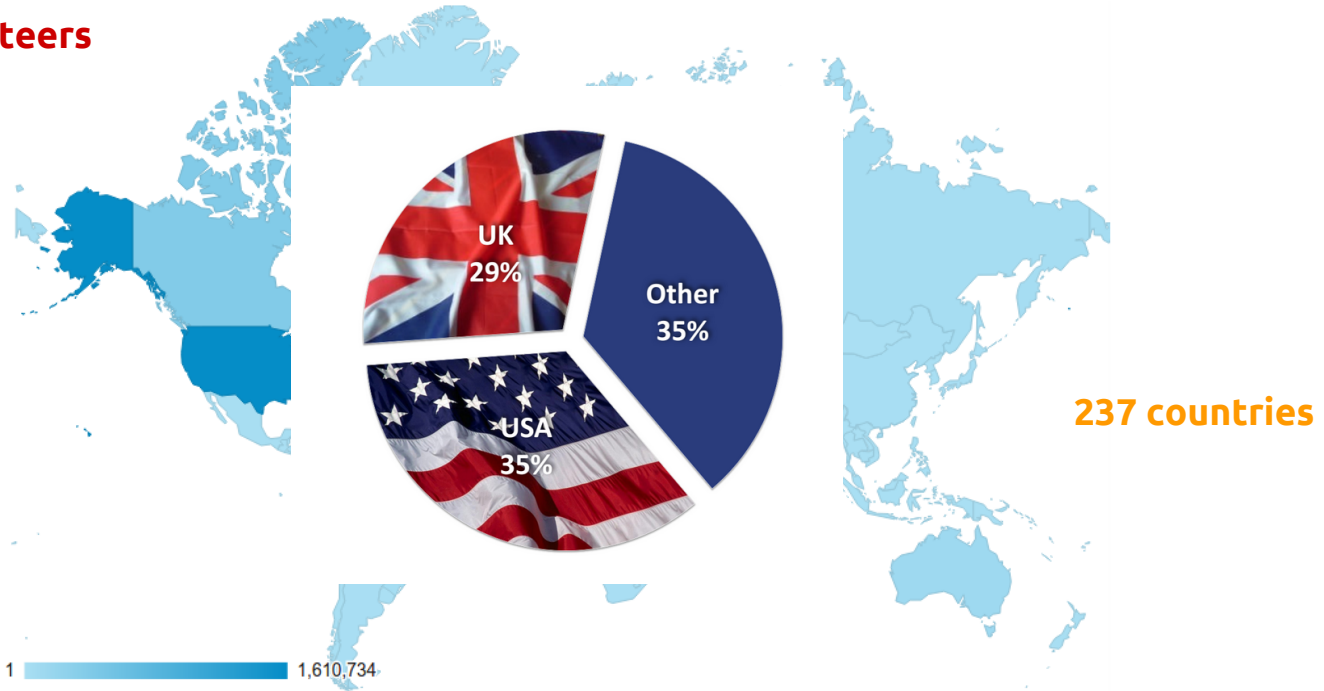


**237** countries

1  1,610,734

# Location

**1,362,506** volunteers



**Community = Volunteers + Researchers**



Discover

Learn

Talk

Collect

BUILD A PROJECT

mrniaboc

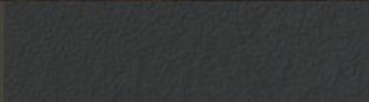
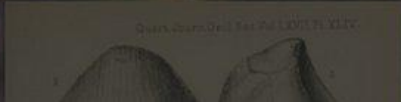
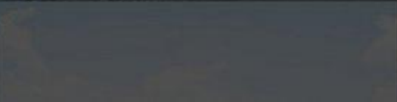
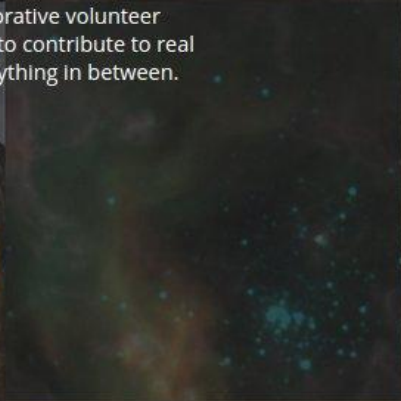
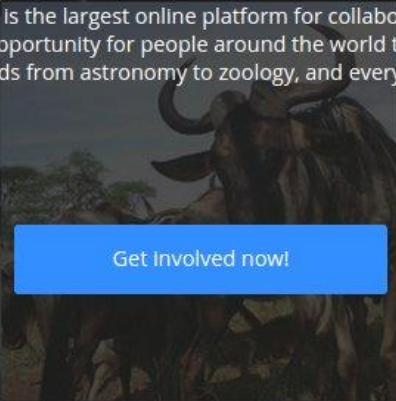


ZOOIVERSE

## People-Powered Research

The Zooniverse is the largest online platform for collaborative volunteer research, and an opportunity for people around the world to contribute to real discoveries in fields from astronomy to zoology, and everything in between.

Get involved now!





PROJECT #974

**Project details**[Research](#)[Results](#)[FAQ](#)[Education](#)[Collaborators](#)[Media](#)[Visibility](#)[Talk](#)[Data Exports](#)

## WORKFLOWS

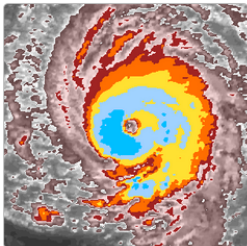
[Eye Finder](#)[New workflow](#)

## SUBJECT SETS

[Cyclones](#)[New subject set](#)[Delete this project](#)

Input the basic information about your project, and set up its home page.

## Avatar



Pick a logo to represent your project. To add an image, either drag and drop or click to open your file viewer. For best results, use a square image of not more than 50 KB.

## Background Image



This image will be the background for all of your project pages, including your project's front page. To add an image, either drag and drop or left click to open your file viewer. For best results, use good quality images no more than 256 KB.

Volunteers can choose which

## NAME

Cyclone Center: Eye of the Storm - Alpha

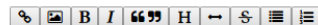
The project name is the first thing people will see about the project, and it will show up in the project URL. Try to keep it short and sweet. Your project's URL is [/projects/mmiaboc/cyclone-center-eye-of-the-storm-alpha](#)

## DESCRIPTION

A spin-off from Cyclone Center to find just the storms with eye walls.

This should be a one-line call to action for your project that displays on your landing page. Some volunteers will decide whether to try your project based on reading this, so try to write short text that will make people actively want to join your project.

## INTRODUCTION



Add a brief introduction to get people interested in your project. This will display on your landing page.

## WORKFLOW DESCRIPTION

Add text here when you have multiple workflows and want to help your volunteers decide which one they should do.

## TAGS

Tags:

Enter a list of tags separated by commas to help users find your project.



Discover

Learn

Talk

Collect

BUILD A PROJECT

mrniaboc



KITTEH ZOO

SCIENCE

CLASSIFY

DISCUSS

Classify cats. On the internet. For science.

Get started!

Cats are great. Where would we be without them? Missing a lot of Egyptian art, that's for sure.

But we need to know more. Can you help us?

*Note: this is just a demonstration project.*

ZOOVERSE

Discover  
Project List

Learn  
About Us  
Our Team  
Education  
Privacy policy

Talk  
Zooniverse Talk  
Other Talk



# We're still working!



**Text**



**Audio**



**Video**

# Why do our volunteers do it?

