

Community monitoring of illegal logging in Prey Lang, Cambodia

Søren Brofeldt, Nerea Turreira Garcia,
Ida Theilade and Henrik Meilby

Science for the environment 2015
University of Århus
2 october, 2015

UNIVERSITY OF
COPENHAGEN



Outline

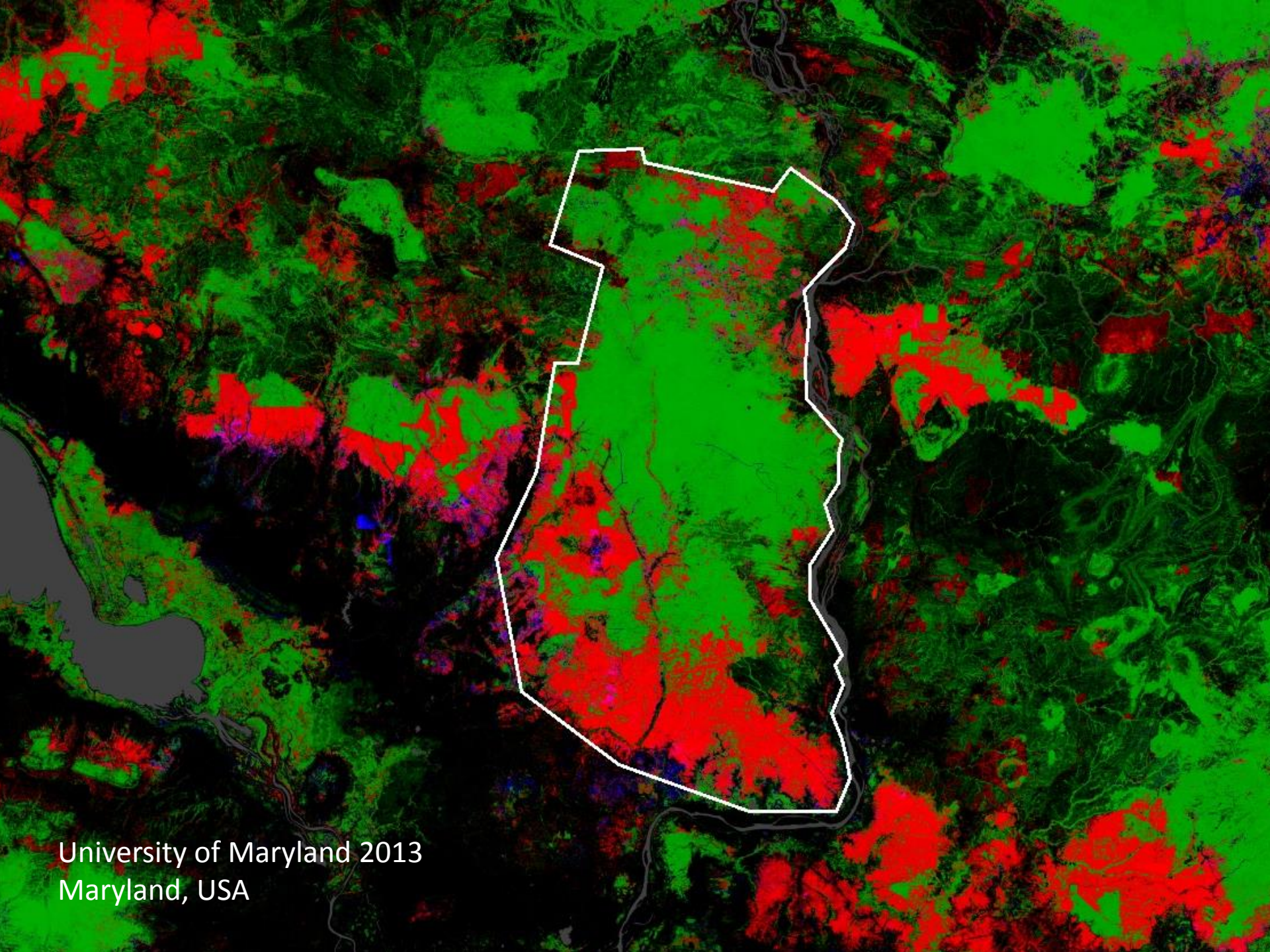
- Setting the scene
- The project and the objectives
- Developing the app
- Implementation in practice
- Outputs
- Impact



Sitizen Science and ICT are tools...

... and so you need a good task for which to use them, if you want to know about how they can be used and how effective they are.





University of Maryland 2013
Maryland, USA

Prey Lang – it's our forest too



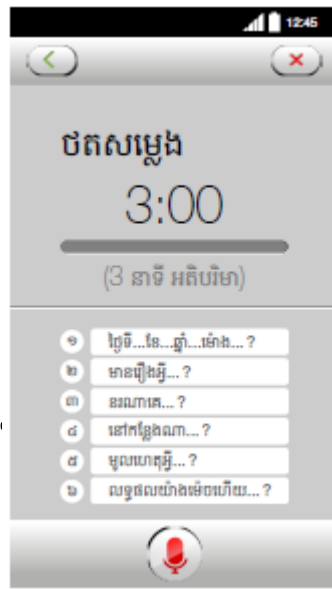
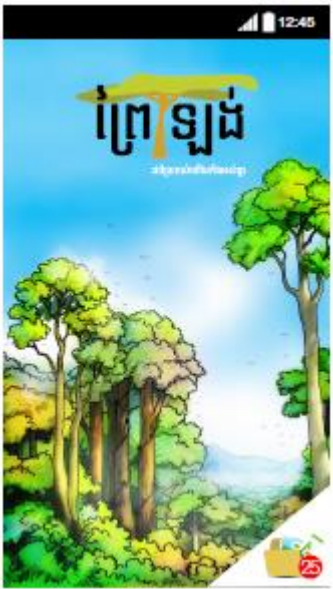
DET NATUR- OG
BIOVIDENSKABELIGE FAKULTET
KØBENHAVNS UNIVERSITET



Increasing **amount** and **quality** of information collected

- Information compiled in one place
- Supporting advocacy for PL protection
 - Systematic (quantifiable) information
 - Hard proof (Picture, GPS coordinates, date)
- ICT can offer all these things!





ar

ica



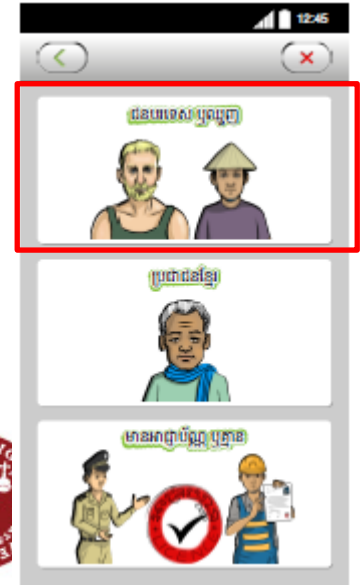
(U



place



)



Started development in August 2014

Started data collection in February 2015

34 phones in the field – in all 4 provinces

Online database.

Quality check.

We are currently in the process of publishing the 3rd report



Input to app development

Community Monitors:

- Monitoring priorities.
 - Examples from experiences in the forest.
-
- Feedback on functionality.

Data base managers:

(Technology Developers)

- App and decision tree setup.
 - Data base design
-
- Solutions for problems encountered.



Paradigms merging

The app has moved from simple to complex with consecutive versions.

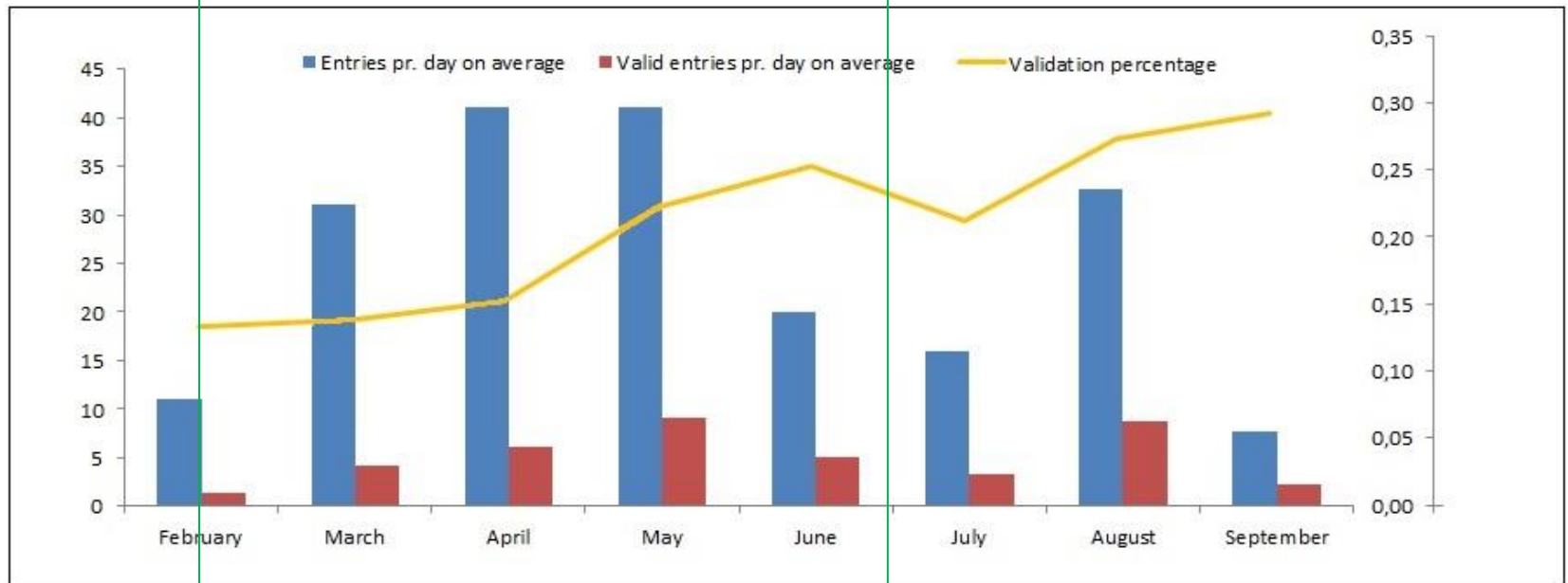
This doesn't seem to have affected the quality of information collected



Data collected

Version 2

Version 3



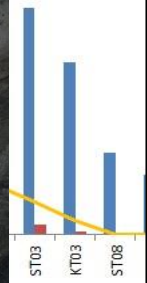
DET NATUR- OG
BIOVIDENSKABELIGE FAKULTET
KØBENHAVNS UNIVERSITET



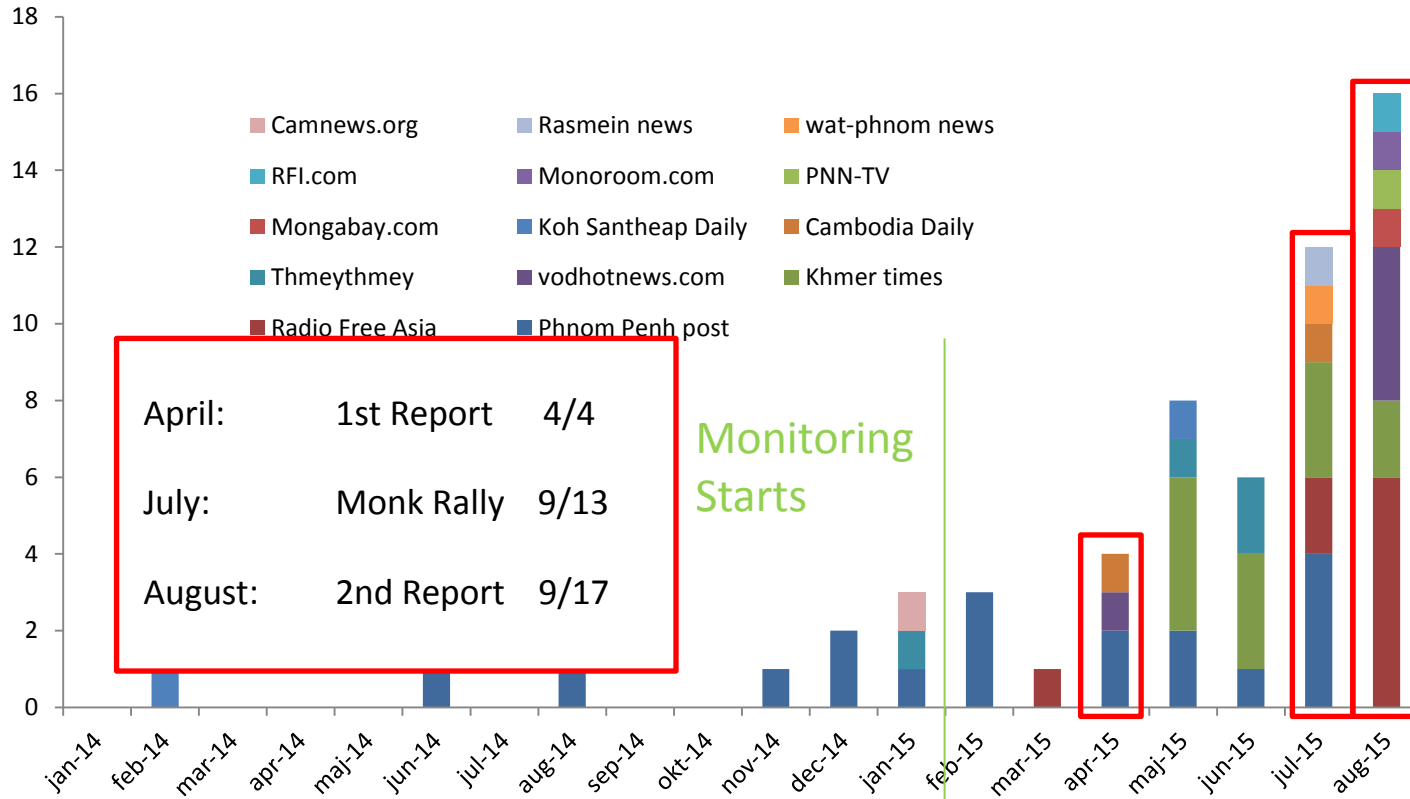


dua

Success ra



Media coverage



Thank you

Søren brofeldt
University of Copenhagen
Institute for Food and Ressource Economics
Global Development Section
E-mail: sb@ifro.ku.dk
Phone: +45 23320824

