

# Systemmapping Nordic Alternative Protein Industry

Pernille Martiny Modvig and Henrik Nørby  
Søndergaard, EIT Climate-KIC

EIT ClimateKIC is a European **knowledge and innovation community** working to accelerate the transition to a **zero-carbon economy** through **whole systems** transformation



We educate the next generation of Climate entrepreneurs and change makers



We run the world's largest climate change start-up accelerator



We bring together partners from academia, business and cities/regions on major innovation projects

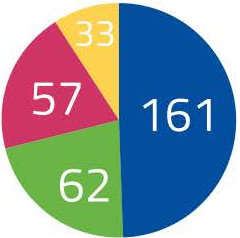
# Our Partnership Community



## Core Partners

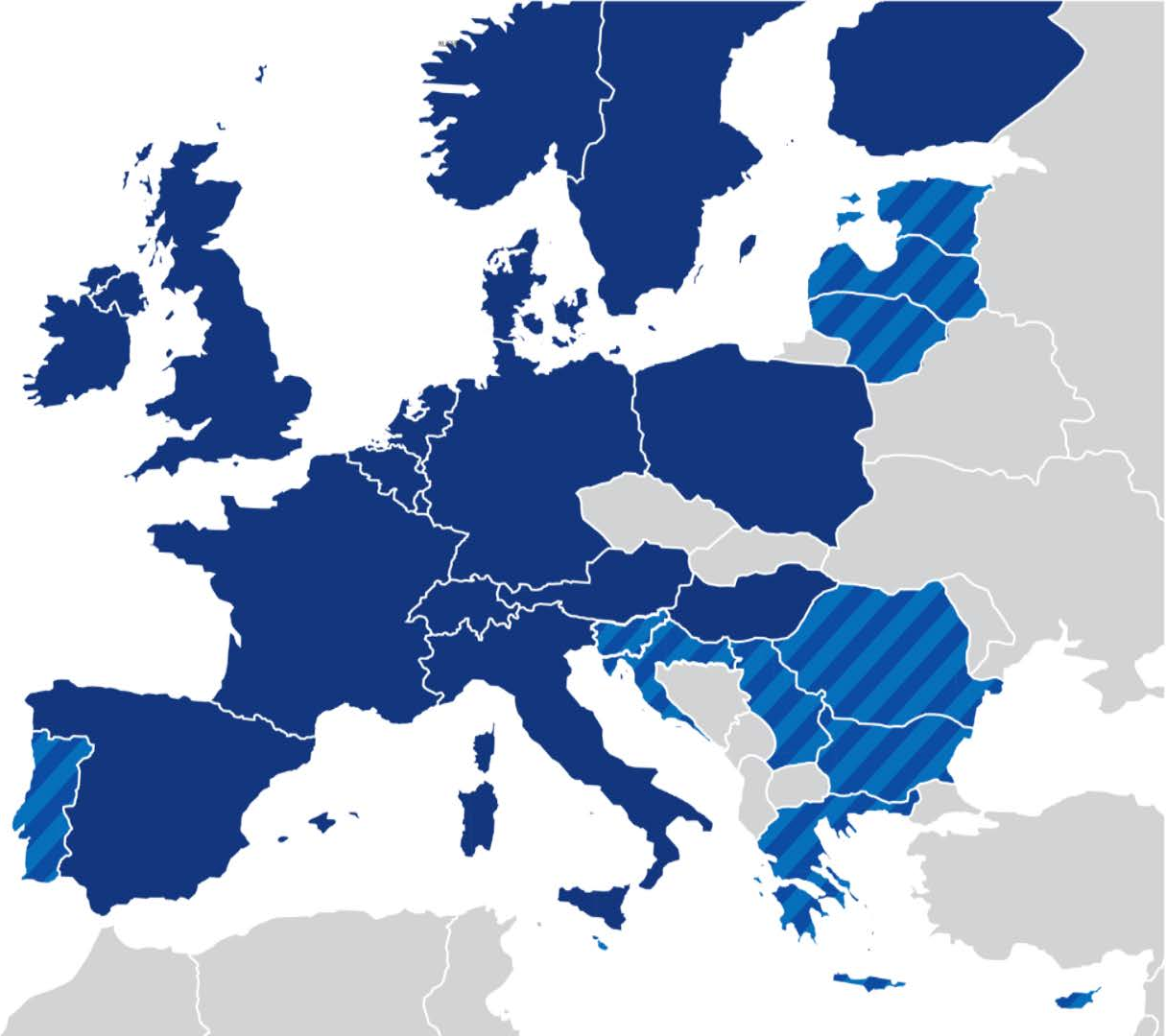
# EIT Climate-KIC across Europe

-  EIT Climate-KIC countries
-  EIT Regional Innovation Scheme countries (RIS)



Number of partners distributed by sector

-  Higher Education
-  Business
-  Research
-  Cities, Regions & NGOs



# 2030 Impact Goals and Transformation Pathways



# Sustainable Land Use



NORDIC INITIATIVES



A Nordic Secretariat for Wood in Construction supporting many initiatives / Funded by Nordic Council of Ministers



Climate-relevant metrics and methods to measure environmental impacts of urban food systems / City of Copenhagen



System-mapping Nordic Alternative Protein Industry (SNAPI) / University of Copenhagen and the Nordic Regional Hub

# The Protein Challenge

The Nordic region is in a unique position to build a regional, sustainable protein industry.

With an extensive agri- and aquaculture industry and some of the world's leading research institutions, a worldwide reputation of food security along with strong support systems for entrepreneurship, the region holds a huge, untapped potential for self-sufficiency when it comes to protein to ensure food security without compromising the environment.

# SNAPI Workshop in November 2018

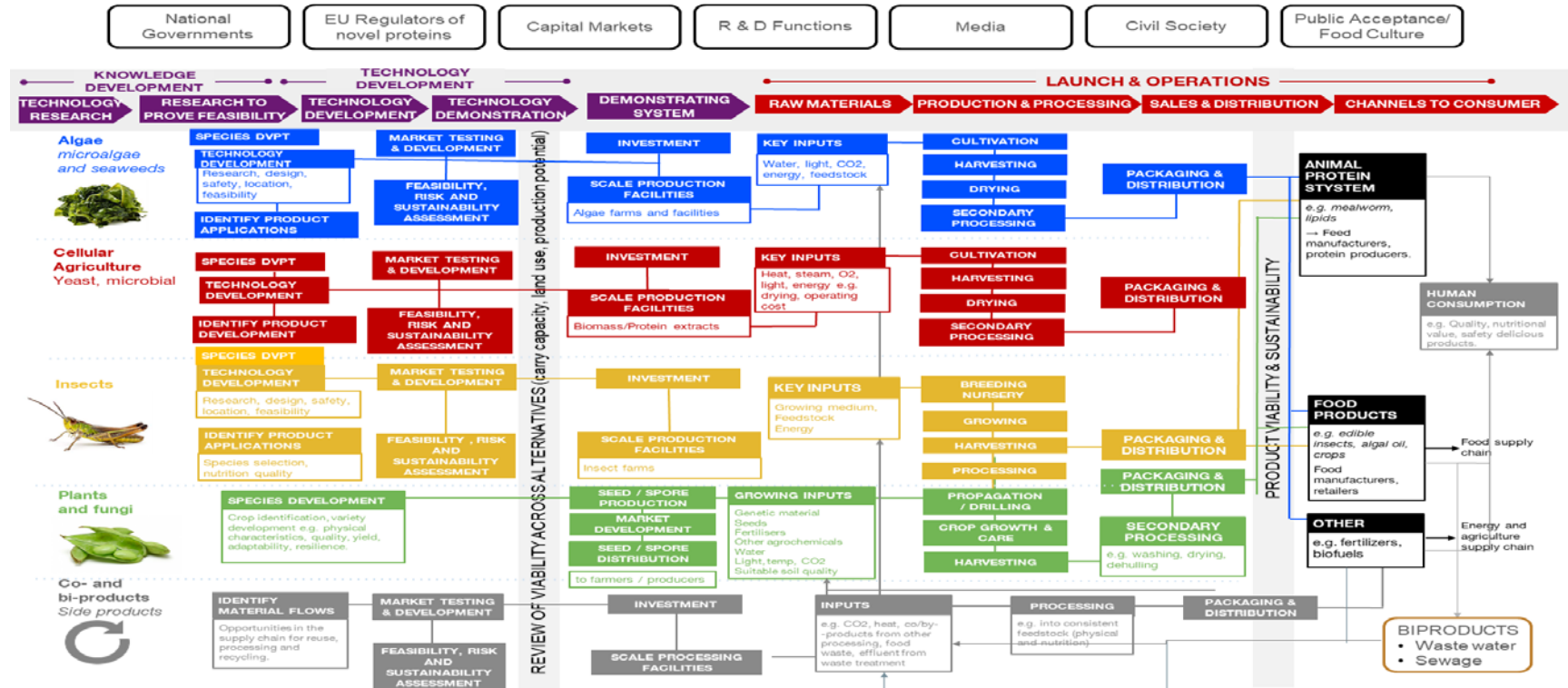
- The System Mapping of Nordic Alternative Protein Industry workshop gathered key actors from public and private sectors with representatives from almost every Nordic country (Denmark, Sweden, Norway, Finland and Iceland)
- Challenge to create the first system mapping of alternative protein in the Nordic region.
- Climate KIC, University of Copenhagen and Forum for the Future used a system thinking approach for the workshop





# SNAPI Workshop in November 2018

## Alternative Protein System Map



# Connecting to the ecosystem

Nordic sustainable protein industry with regional protein selfsufficiency.

Engage ecosystem of stakeholders and players within the field and build strong partnerships.

Connect with Europe-wide key players on alternative proteins.

- **EAT Forum**, 12-13 June, Stockholm
- **Circular Bioeconomy Days 2019**, 25 - 27 June, Aarhus, Denmark
- **World Food Summit**, 29 - 30 August, Copenhagen, Denmark
- **C40 Mayors Summit**, 9 - 12 October, Copenhagen, Denmark

# EAT Forum

Based on the inspirational talks, we explored barriers to scale for the alternative protein market, exploring those related to policy, research & development, and consumer demand.

Four common themes emerged:

- The cultural barrier – eating plant-based diets is not considered ‘normal’
- Lack of skill for processing alternative proteins in all levels of the value chain
- We do not pay the “true cost” of food
- Scale: The market is still very niche, preventing it from reaching financial parity.



# Circular bioeconomy days 2019 – Thursday 11-12

## Challenges and opportunities in developing a systemic perspective on sustainable proteins for food and feed

- We will dive into opportunities and barriers in driving the needed systemic change towards sustainable food systems of the future.
- The work will build on the systems map of Alternative proteins and the Feed Compass as developed by the two hosting organizations.
- Together we will seek to identify where we are seeing action in the Nordics that enables the work towards regional protein self-sufficiency and examples of where the Nordics have lead change that others could learn from as well as dive into areas where more action is needed.



**YOU DO NOT WANT TO MISS THIS - ONLY 60 SEATS**

A person in a light-colored jacket and dark pants stands on a rocky mountain peak, holding a trekking pole. They are looking out over a vast mountain range under a cloudy sky. The scene is captured in a cinematic, slightly desaturated style.

Thanks  
Lets collaborate