


---

# Nature management in a climate perspective

## - Experiences from Aquarius

Project Manager, Irene Wiborg,  
Knowledge Centre for Agriculture in Denmark

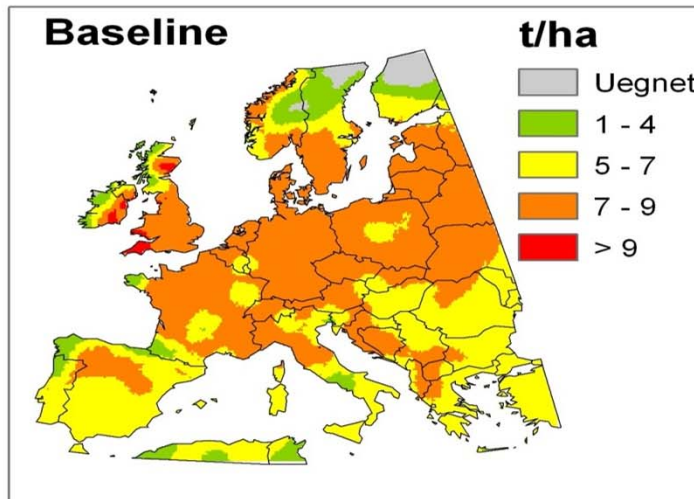


Aquarius: a unique partnership  
creates common knowledge about  
the challenges for the environment  
and for farming in a changed climate

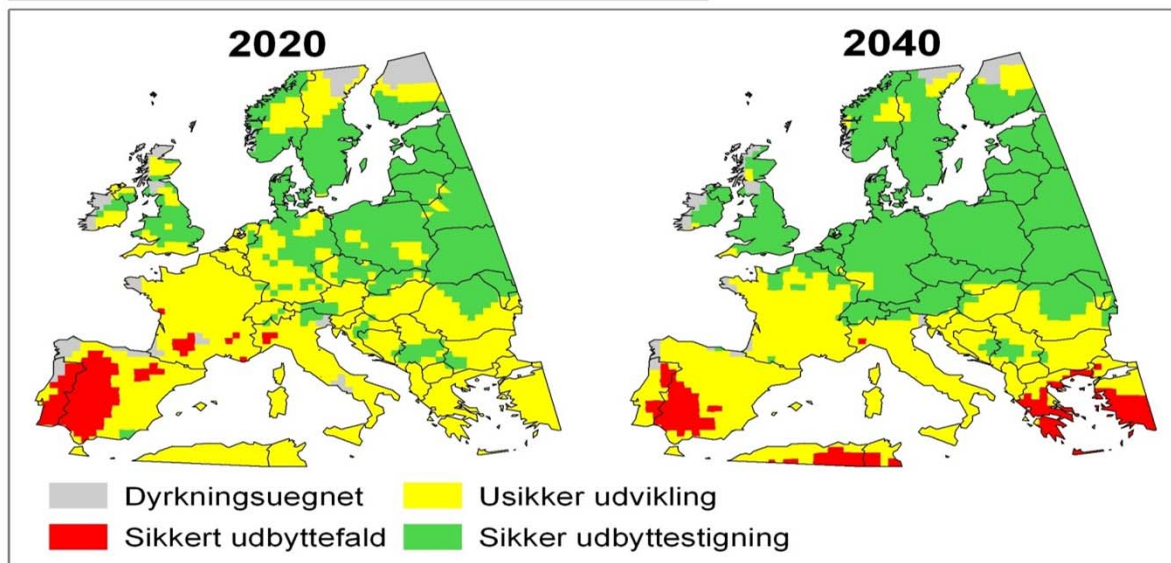


## Important for cooperation

- A common starting point – a knowledge based foundation.
- Knowledge – preferable visualised – showing the consequences of climate changes for farming and for the environment.
- Based on knowledge new innovative ideas for adaptation can be created – often we can create solutions.



Source: Aarhus University, Jørgen E. Olesen et al.



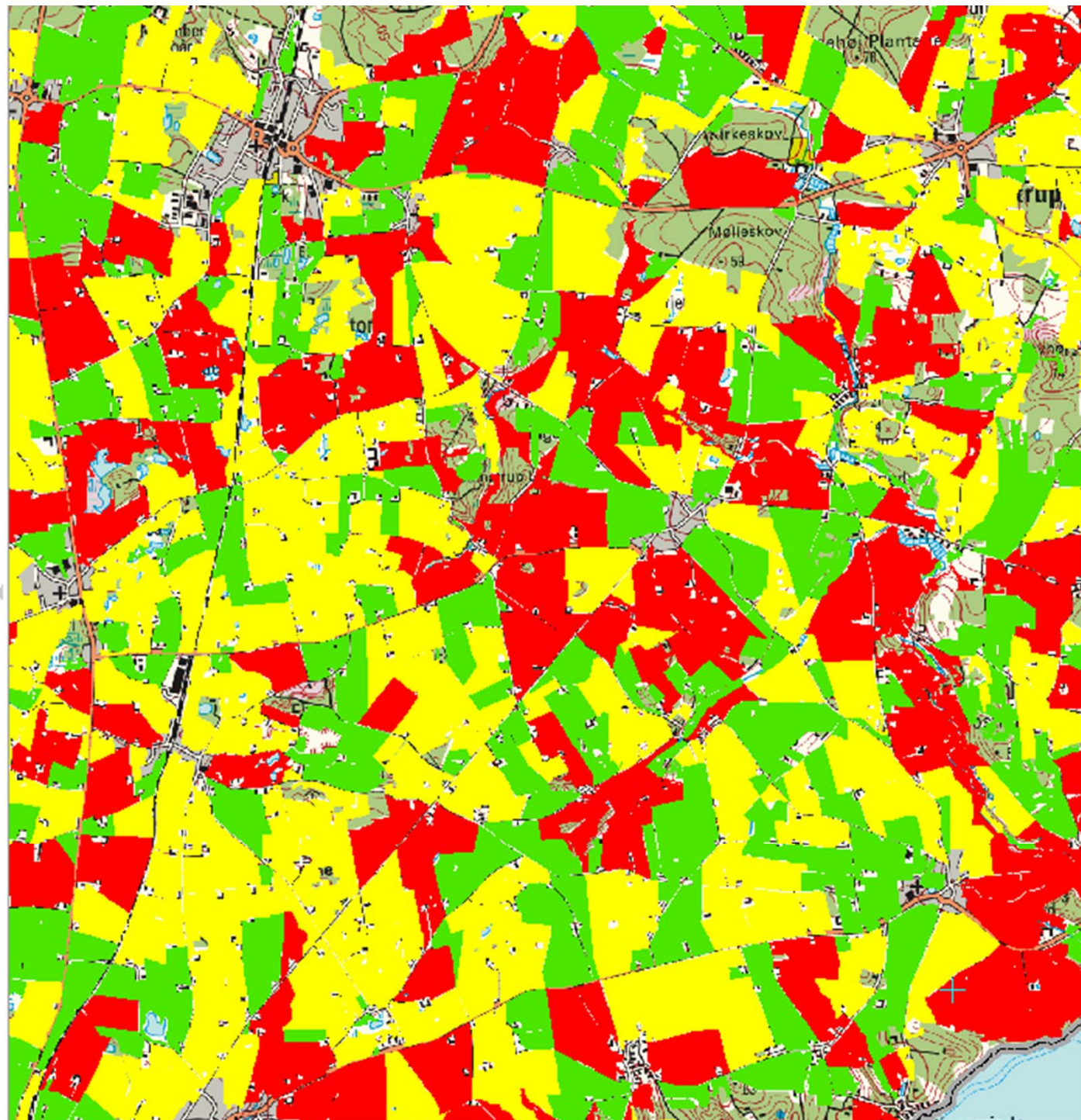
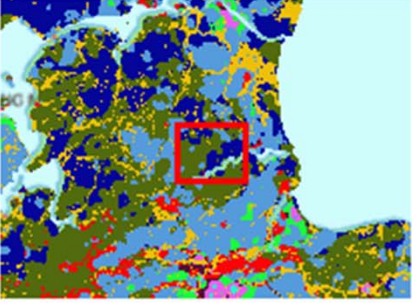
**Results** ▾ >>

**Map Contents** ▲ >>

- ▣  PindeksDK
  - ▣  Bindinger
  - ▣  Opland
  - ▣  Overfladevand
  - ▣  Blok2003
  - ▣  Erosionsrisiko
  - ▣  P Indeks
    - ▣  PI Erosion
      - 0,0000 - 50,0000
      - 50,0001 - 90,0000
      - 90,0001 - 100,0000
    - ▣  PI Overflade
    - ▣  PI Matrix
    - ▣  PI Makropore
  - ▣  Jordbund
    - ▣  lavbund
    - ▣  JB nummer
    - ▣  Fosforbinding
  - ▣  Makropore
  - ▣  Baggrundkort

◀  ▶

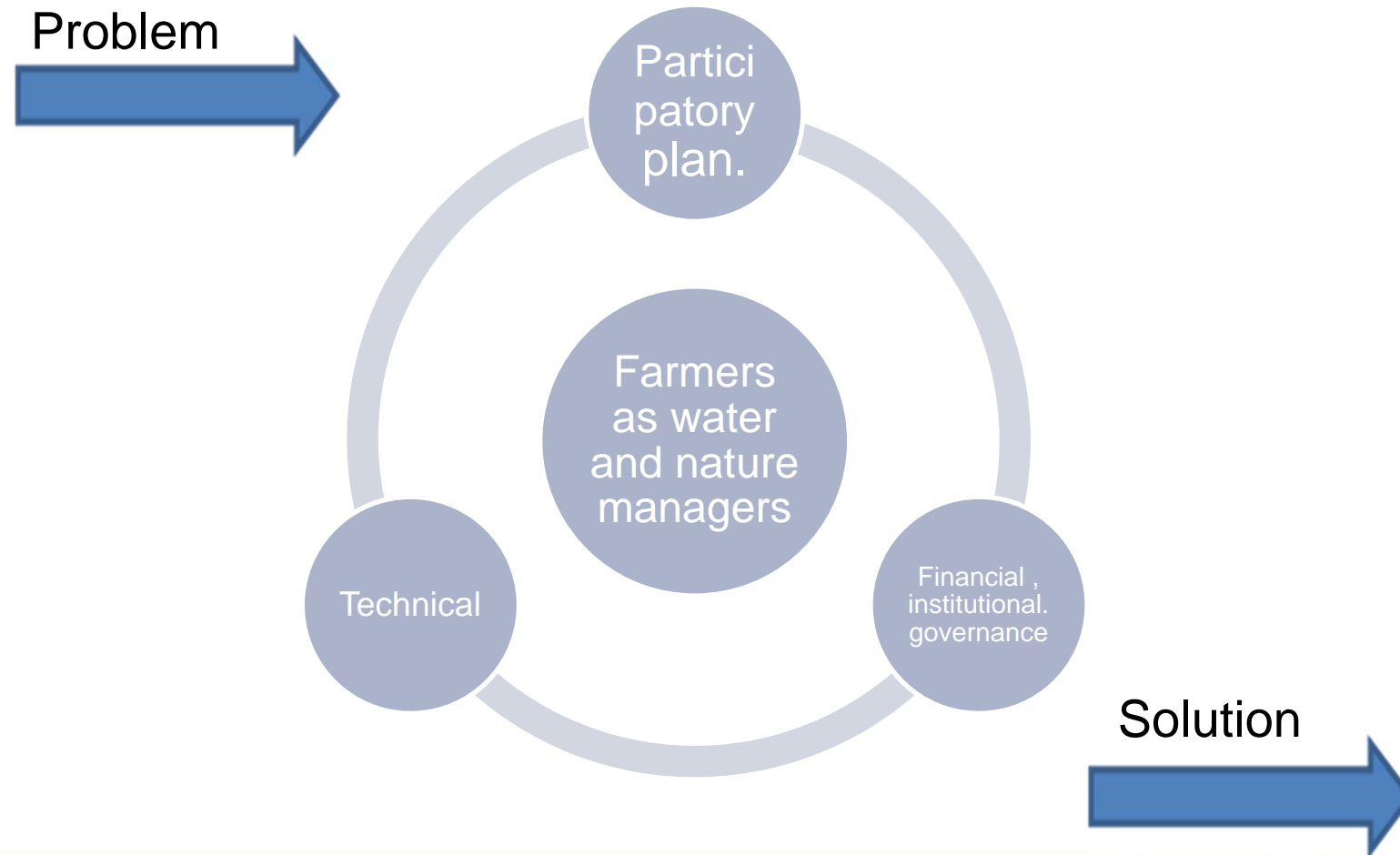
**Overview** ▲ >>



# Observations from a practitioners point of view – knowledge transfer – N retention risk



# How to find the win-win solutions?





More information at the

## **AQUARIUS End Conference**

12 – 13 October

[HTTP://WWW.AQUARIUS-NSR.EU/](http://www.aquarius-nsr.eu/)