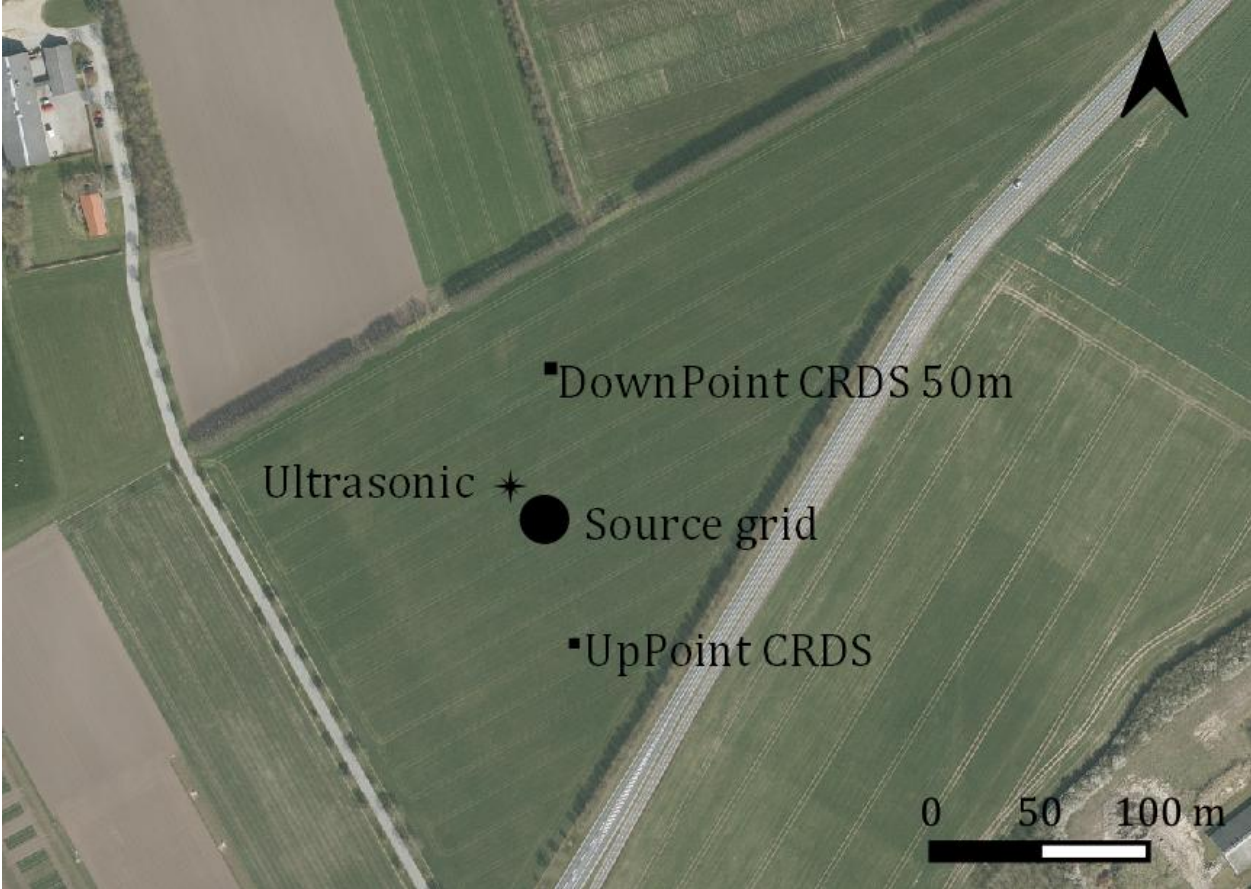
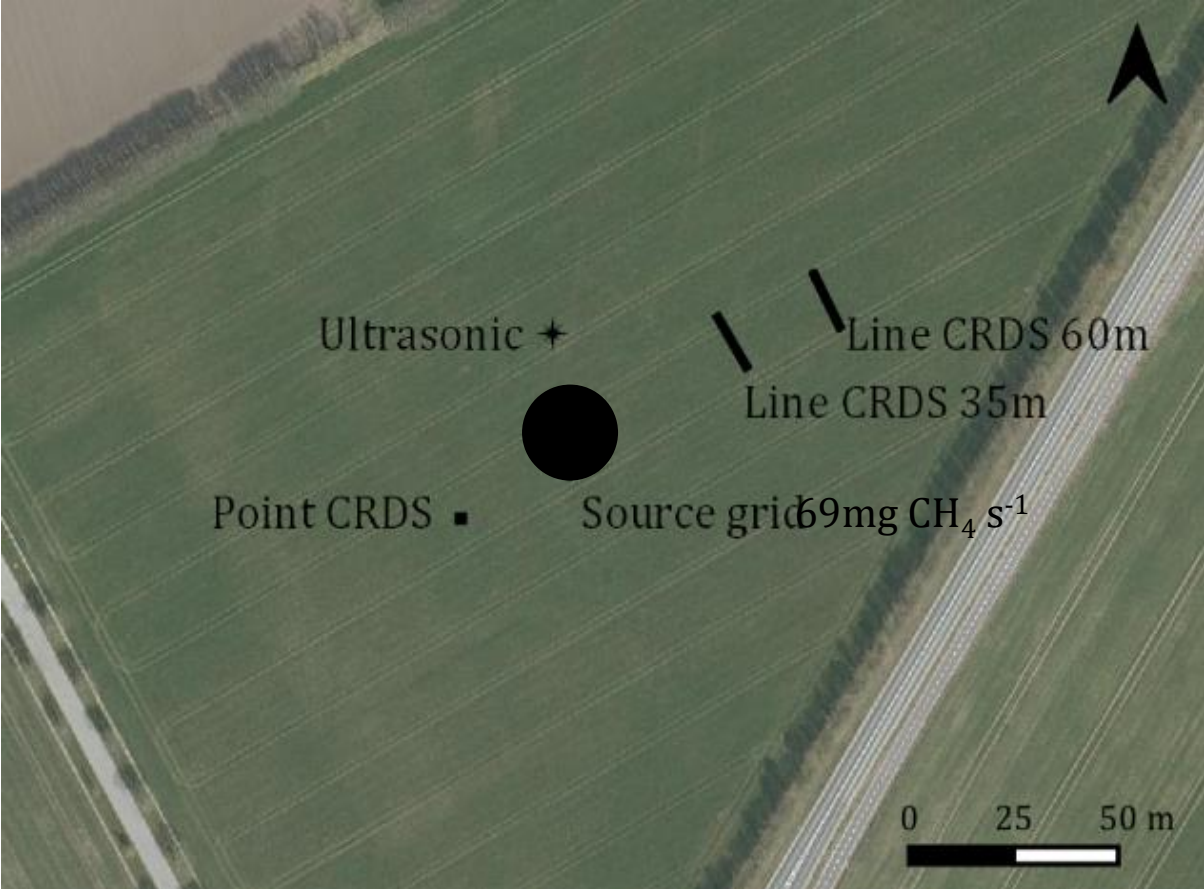


# Controlled release of methane to validate sampling line for emission estimates with inverse dispersion modelling

Point-measurement

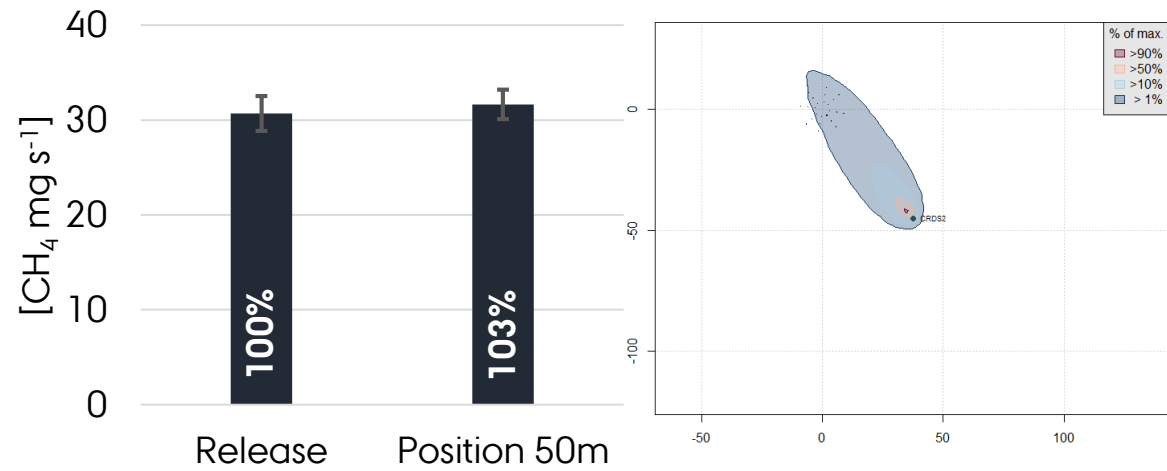


Line-measurement

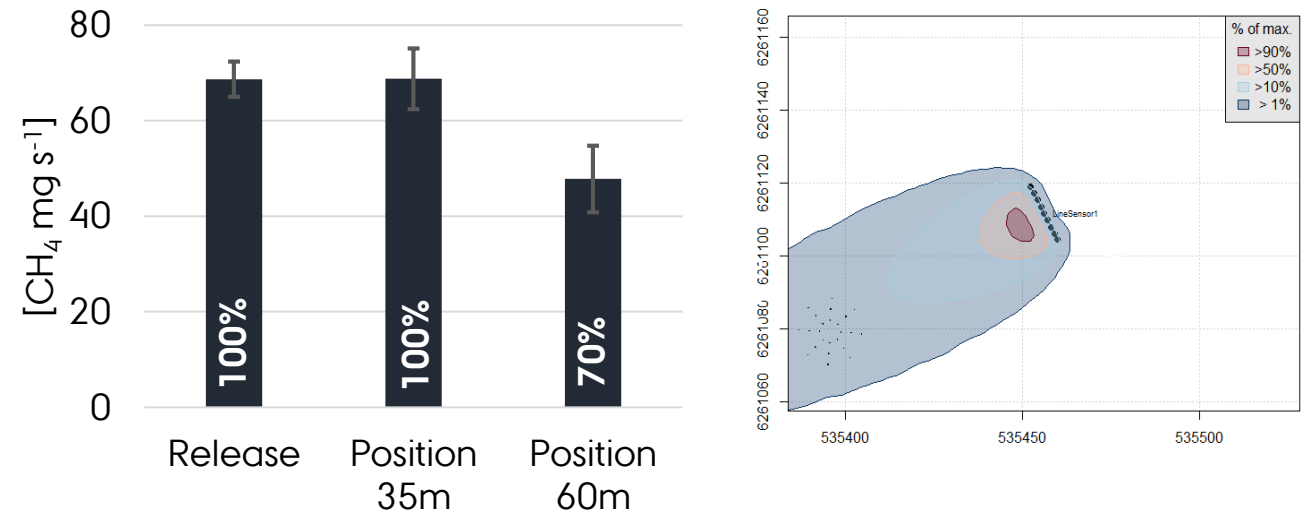


# Released vs Measured

## Point-measurement



## Line-measurement



## Conclusion

- Point and line integrated concentration measurements for bLS provide good estimates of emissions.
- Line integrated measurements catch more of the plume from a source.
- Sensitivity limits the downwind distance from the source.