

# The Importance of Integrating Biodiversity Values in Arctic Mining Projects during Early Stages of Decision-making

By Elena F. Tracy, PhD

Sustainable Development Advisor, WWF Arctic Programme, email  
[etracy@wwf.no](mailto:etracy@wwf.no)

Presentation delivered at the Arctic Mining Workshop, March 23, 2023



# Presentation outline:

1. Key impacts and responsible mining mitigation hierarchy
2. WWF principles on responsible mining in the Arctic
3. Citronen Fjord Mining Project: crossing the red lines
4. A short criteria for a meaningful engagement with rightsholders and stakeholders



© Paul Nicklen/National Geographic Stock / WWF-Canada



# Arctic mining impacts (including coastal and marine) and mitigation hierarchy

## Impacts:

- Large footprint and impacts on biodiversity
- Requires a lot of energy
- High water use
- Waste
- Pollution
- Transportation impacts from expanded infrastructure and shipping

## Mitigation hierarchy:

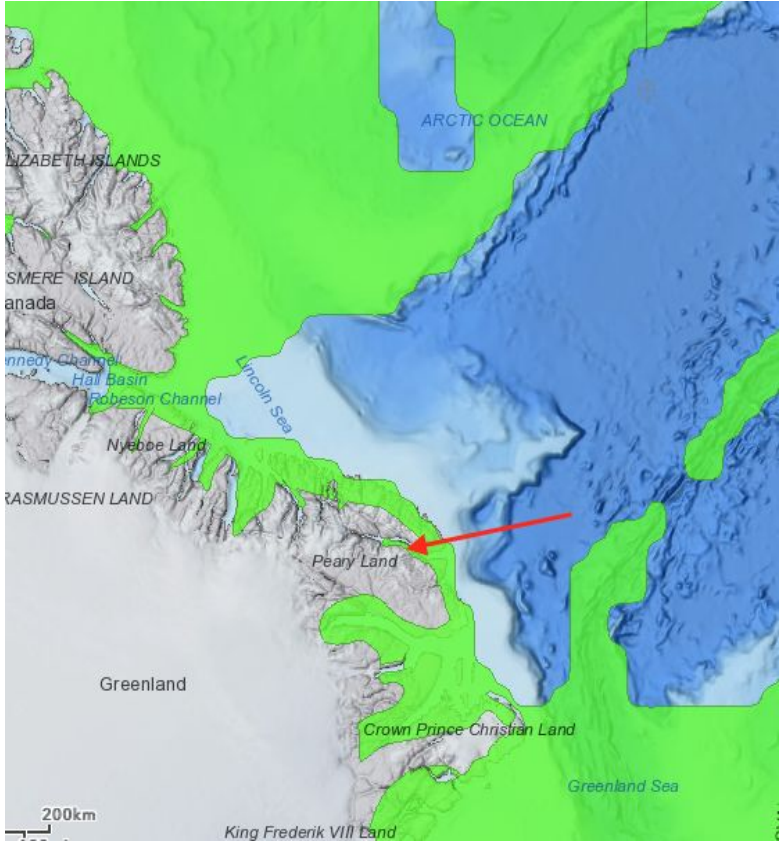
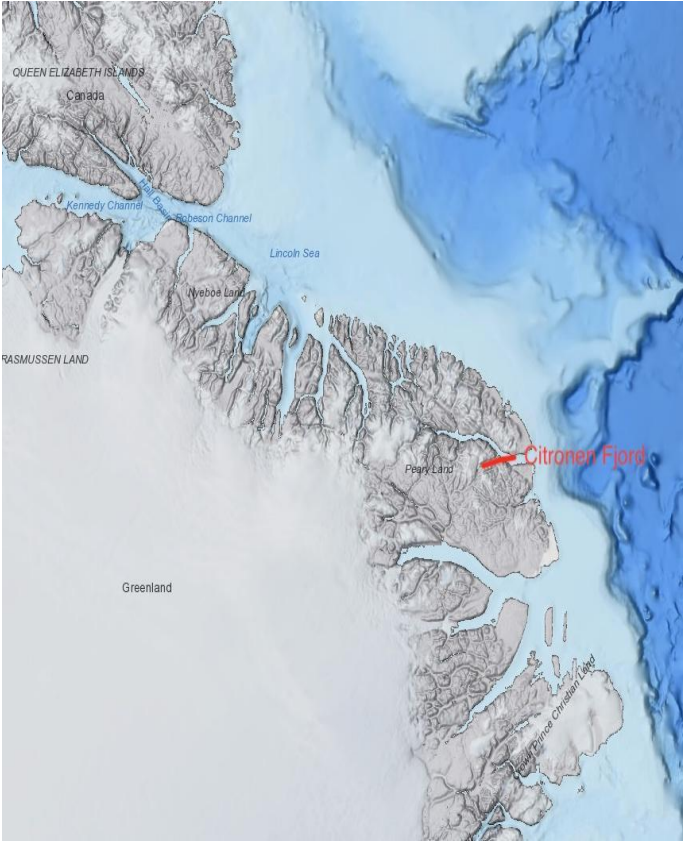
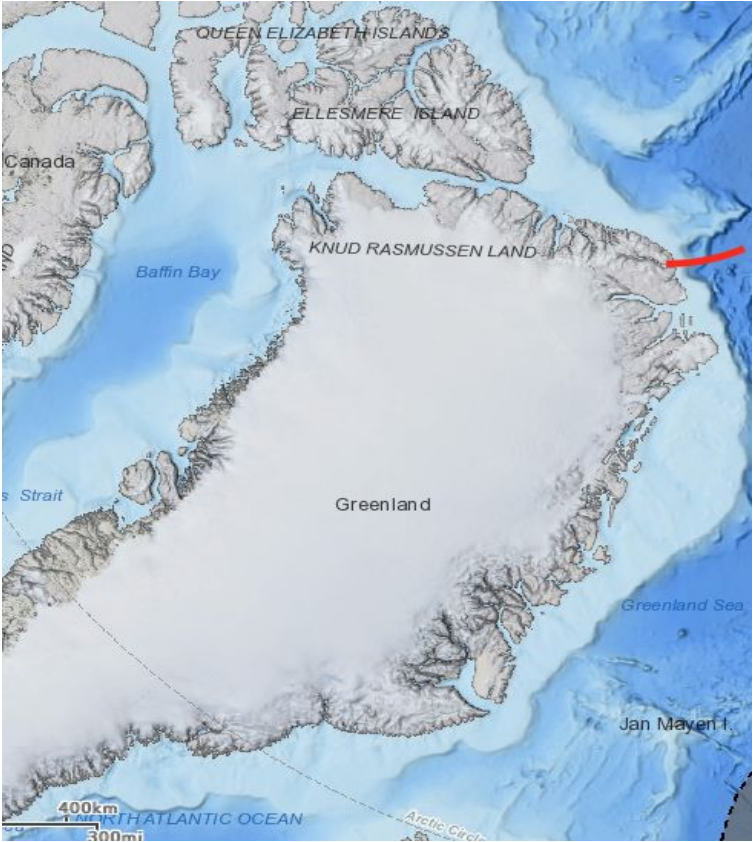
- Avoid and prevent
- Minimize
- Restore
- Offset

# Some principles on responsible mining in the Arctic

- Be guided by existing best global practices established by the IUCN, ICMM and CBD
- Be tailored to the Arctic Context and informed by Indigenous, traditional and local knowledge
- Consider the full cycle of activities
- Include Red lines or No-go practices and processes that seriously threatens Arctic biodiversity:
  - ✓ *Mining in Protected Areas and Ecological Corridors*
  - ✓ *Ecological compensation and offset (last resort)*
  - ✓ *Deep seabed mining*
  - ✓ *Stranded assets (abandoned infrastructure)*



# Crossing the red lines: Citronen Fjord project



Source: WWF ArcNet 1.0



# The importance of incorporating biodiversity values in marine and terrestrial spatial planning (ecosystem-based management)

- Assessing negative impacts at a landscape/regional level
- ArcNet of Priority Areas for Conservation and Connectivity Corridors (including Blue Corridors) are blueprint for ecosystem based spatial marine and terrestrial planning
- Implementing circular economy to avoid mining development in Arctic ecological sensitive areas

## A short criteria for meaningful consultations with rightsholders, stakeholders, and scientific community

- A non-pursuit of new mining projects and associated infrastructure that pose unacceptable risks to biodiversity **should be a real option** for consultations during the initial (pre-planning) phase to render these consultations meaningful.
- Mainstreaming biodiversity is about making appropriate, balanced and sensitive choices rather than checking boxes of consultations before processing anyway.