



STRATEGIC ENVIRONMENTAL IMPACT ASSESSMENT

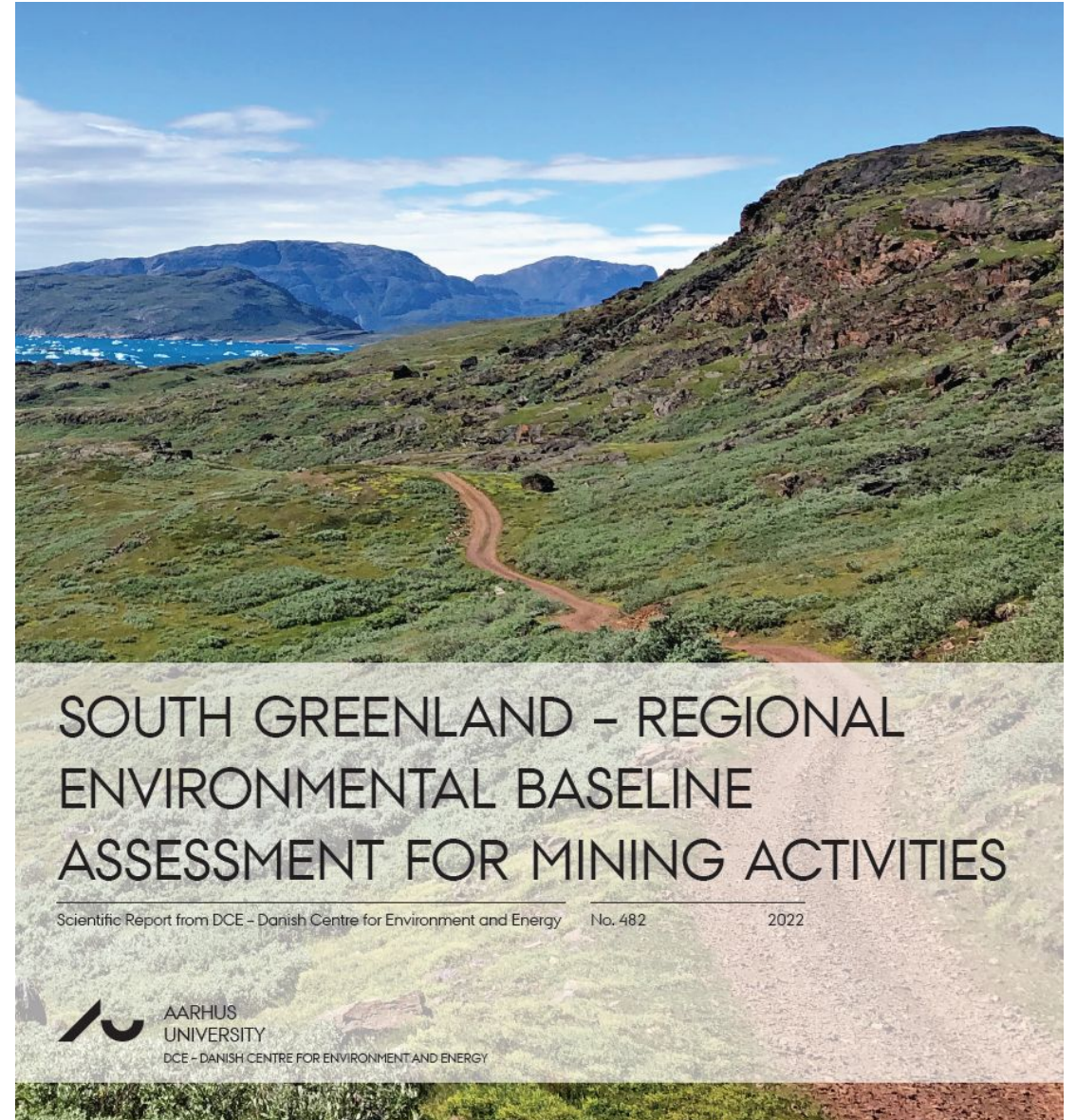
- A GREENLAND EXAMPLE ON HOW TO INFORM A PLANNING
PROCESS

Special consultant, PhD Janne Fritt-Rasmussen, jfr@ecos.au.dk

Arctic Mining Workshop - March 21-23, 2023 - Session
3B

PURPOSE OF TALK

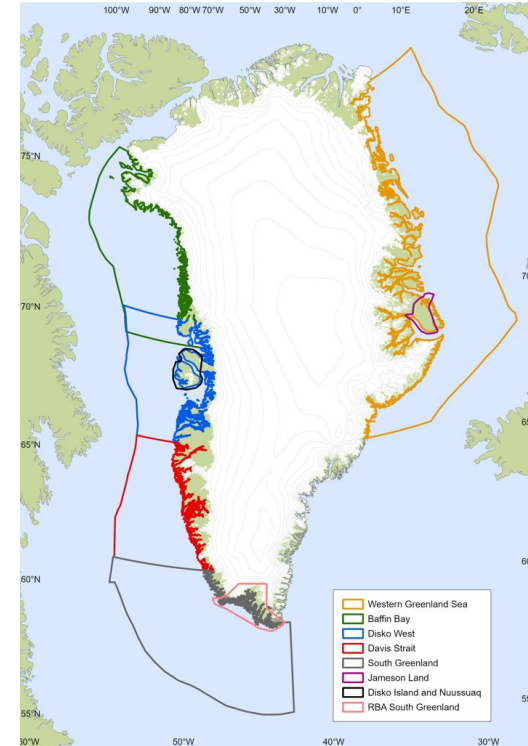
Introduce the concept of *strategic environmental impact assessments and regional environmental baseline assessments* as a potential tool in an environmentally sound planning and regulation of mining activities.



BACKGROUND

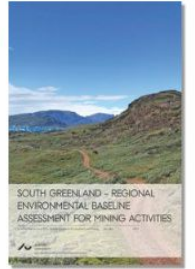
As an aid to obtain a regional overview of nature and environmental conditions The Greenland Environmental Agency for Mineral Resources Activities, has commissioned the preparation of *Strategic Environmental Impact Assessments and Regional Environmental Baseline Assessments*.

The Assessments are being developed by DCE and GINR.

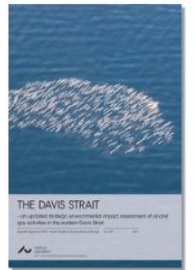


<https://ecos.au.dk/en/researchconsultancy/themes/regional-background-studies>

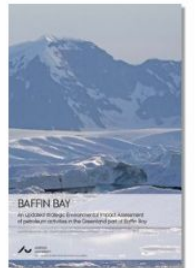
No. 482: **South Greenland - Regional environmental baseline assessment for mining activities.** Fritt-Rasmussen, J., Raundrup, K. & Mosbech, A. (Eds). 2022. Aarhus University, DCE – Danish Centre for Environment and Energy, 186 pp. Scientific Report No. 482.
[Summary](#) | [Sammenfatning](#) | [Eqikkaaneq](#) | [Report](#) (36.14 MB)



No. 439: **Davis Strait – an updated strategic environmental impact assessment of oil and gas activities in the eastern Davis Strait.** Merkel, F., Boertmann, D. & Mosbech, A. 2020. Scientific Report from DCE – Danish Centre for Environment and Energy No. 439, 332 pp.
[Summary](#) | [Sammenfatning](#) | [Imaqarniliq](#) | [Report](#) (36.44 MB)



No. 218: **Baffin Bay. An updated strategic Environmental Impact Assessment of petroleum activities in the Greenland part of Baffin Bay.** Boertmann, D. & Mosbech, A. (eds.) 2017. Aarhus University, DCE – Danish Centre for Environment and Energy, 320 pp. Scientific Report from DCE – Danish Centre for Environment and Energy No. 218.
[Summary](#) | [Sammenfatning](#) | [Eqikkaaneq](#) | [Report](#) (24.00 MB)



Nr. 41: **Jameson Land. A strategic environmental impact assessment of hydrocarbon and mining activities.** Hansen, J., Asmund, G., Aastrup, P., Mosbech, A., Bay, C., Tamstorf, M. & Boertmann, D. 2012. Aarhus University, DCE – Danish Centre for Environment and Energy,



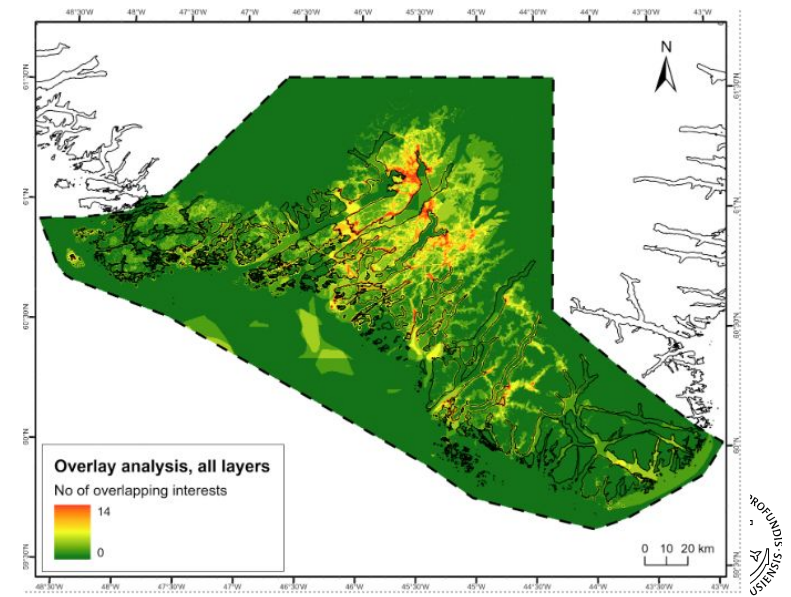
CONTENT OF A SEIA/RBA

- Compiling available data in a report re. geological information, vegetation, important biological areas, environmental chemistry, human use, archeological important areas etc.
- Knowledge of the location of vulnerable and important areas through studies of the distribution of plant and animal species as well as local knowledge.
- Field campaigns for sampling and updating knowledge base.
- Improved public access to updated environmentally relevant knowledge and data

<https://rba.eamra.gl/>

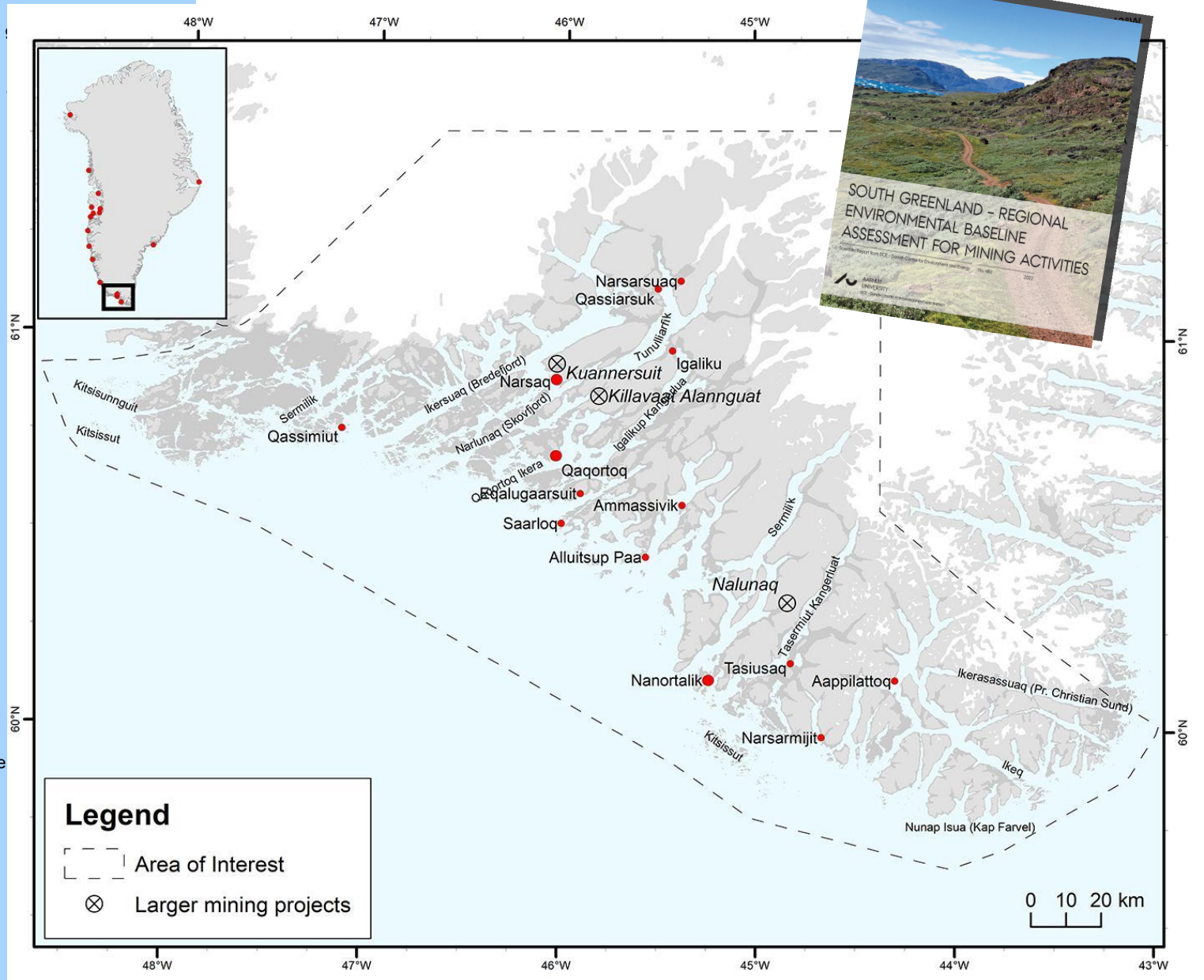
<https://augis.au.dk/portal/apps/webappviewer/index.html?id=aad3dfc90e38470f963bac94377fa189#>

<https://augis.au.dk/portal/apps/webappviewer/index.html?id=3482205f2ea6421aaeaa01db308c6b71>



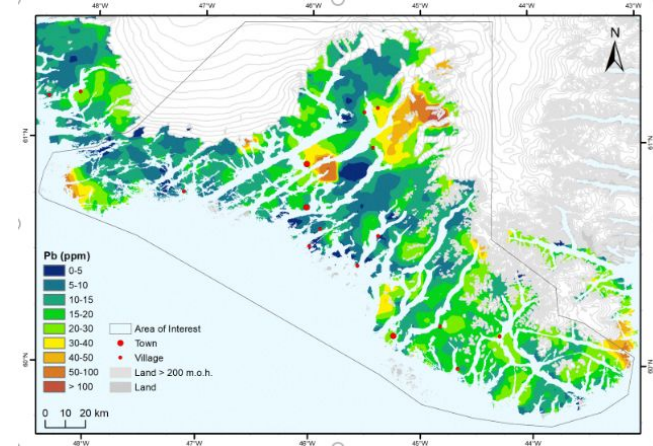
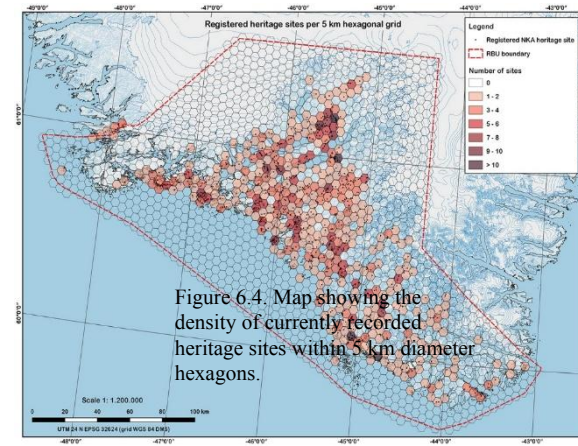
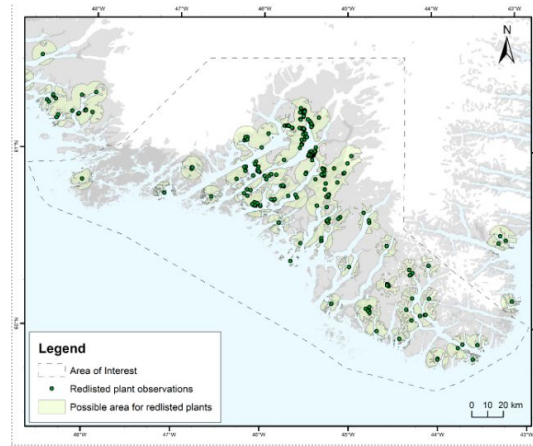
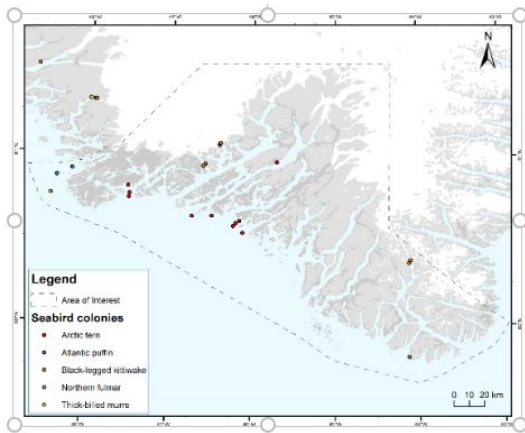
Sammenfatning	6
Summary 7	
Eqikkaaneq	8

1	Introduction – Regional baseline assessments (RBA) of mining activities	
2	Geological setting of South Greenland from a mining perspective	12
3	The environmental baseline chemistry of South Greenland	15
3.1	Overview of available environmental samples analysed for South Greenland	
3.2	Data from areas with former mining activities	19
3.3	Other environmental baseline site investigations	22
3.4	Geological and environmental chemistry	30
4	Biodiversity and biologically important and protected areas	36
4.1	Introduction	36
4.2	Mammals	39
4.3	Birds	40
4.4	Fish and shellfish	50
4.5	Vegetation	51
4.6	List of protected areas	55
4.7	Biologically important areas	56
5	Human use	62
5.1	Introduction	62
5.2	Modern-day agriculture	64
5.3	Muskox introduction	66
5.4	Plantations	66
5.5	Hunting	67
5.6	Coastal fishing	67
5.7	Tourism	73
5.8	Technical infrastructures	75
5.9	Oil spill sensitivity	75
6	Greenland's cultural history – an introduction	79
6.1	National heritage authorities and sites in Greenland	80
6.2	National Greenlandic heritage legislation summarised	81
6.3	Heritage zones	83
6.4	Heritage site density maps	86
6.5	Heritage site location predictive landscape features	87
7	Integrated spatial analysis of overlapping interests	90
7.1	Introduction	90
7.2	Results of the integrated spatial analyses	92
8	Mining and environmental impacts	97
8.1	Environmental impacts from mining activities	97
8.2	Disturbance of wildlife – noisy activities and presence of people and infrastructure	100
8.3	Loss of habitats from constructions and buildings	100
8.4	Pollution from mining activities	101
8.5	Accidents	105
9	Future perspectives and data gaps	106
9.1	Future perspectives	106
9.2	Data gaps	107
Appendix 1	Report on the geological setting of South Greenland	108
Appendix 2	Environmental chemistry baseline values	124
	Regional environmental baseline element values	124
	Greenland environmental baseline element concentration values	152
Appendix 3	Vegetation map of South Greenland	169
Appendix 4	Rules for fieldwork applied in South Greenland – updates on biodiversity and human use areas	182



KEY LEARNING POINTS

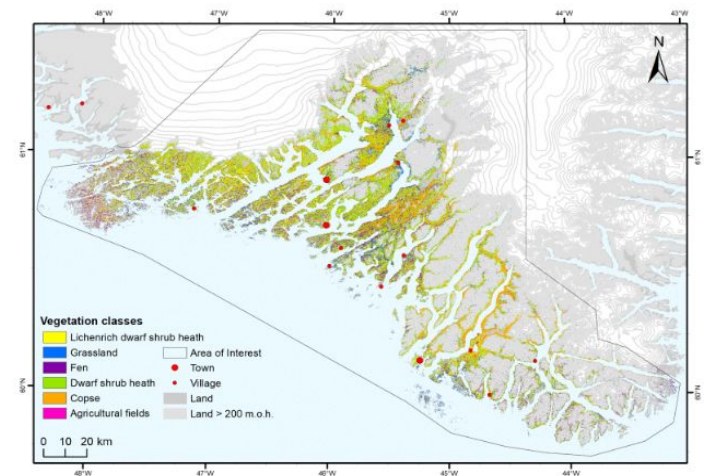
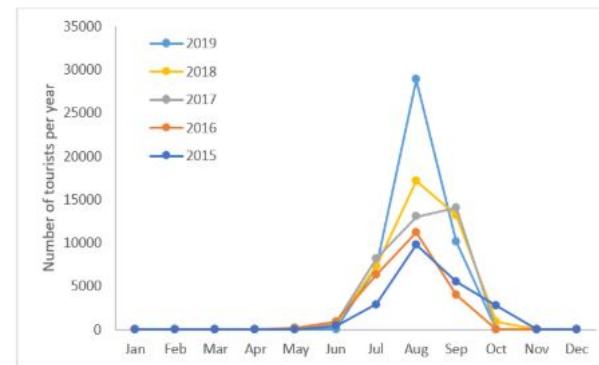
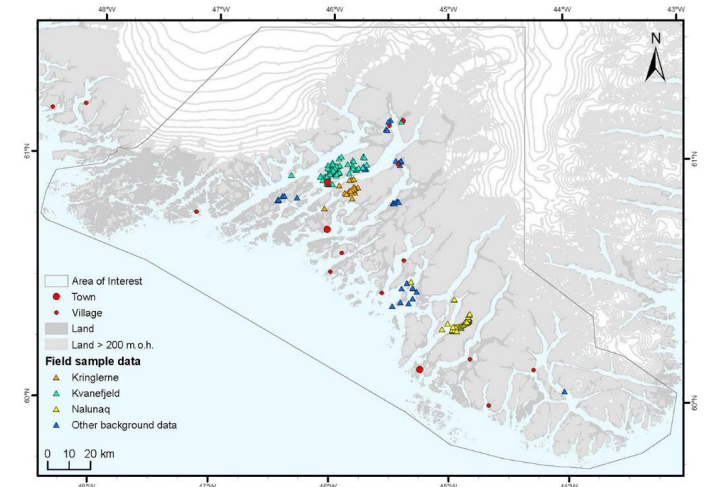
- Knowledge gaps
- Research projects to obtain supplementary data



The regional environmental assessments thus provide an overview of the latest knowledge about nature and the environment for a given area based on research and local knowledge, and the data can be used in many contexts.

THE USE OF RBA/SEIA IN PLANNING

- To make it easier for the authorities to plan and regulate mining activities in relation to nature and the environment.
- To make it easier for locals and other stakeholders to get information on the potential impact of mining activities in the region.
- To make it easier and less costly for companies and their consultants to plan exploration activities considering the environment.



FUTURE FOCUS - NEXT STEPS

- Ease how locals and other stakeholders contribute to the environmental assessments
- Improve our methodology to further ease the access to nature and environmental information to inform public discussions and make it easier for both industry and authorities to plan mining activities wisely



<https://ecos.au.dk/en/researchconsultancy/the-mes/videospots-greenland/>



Thank
you!